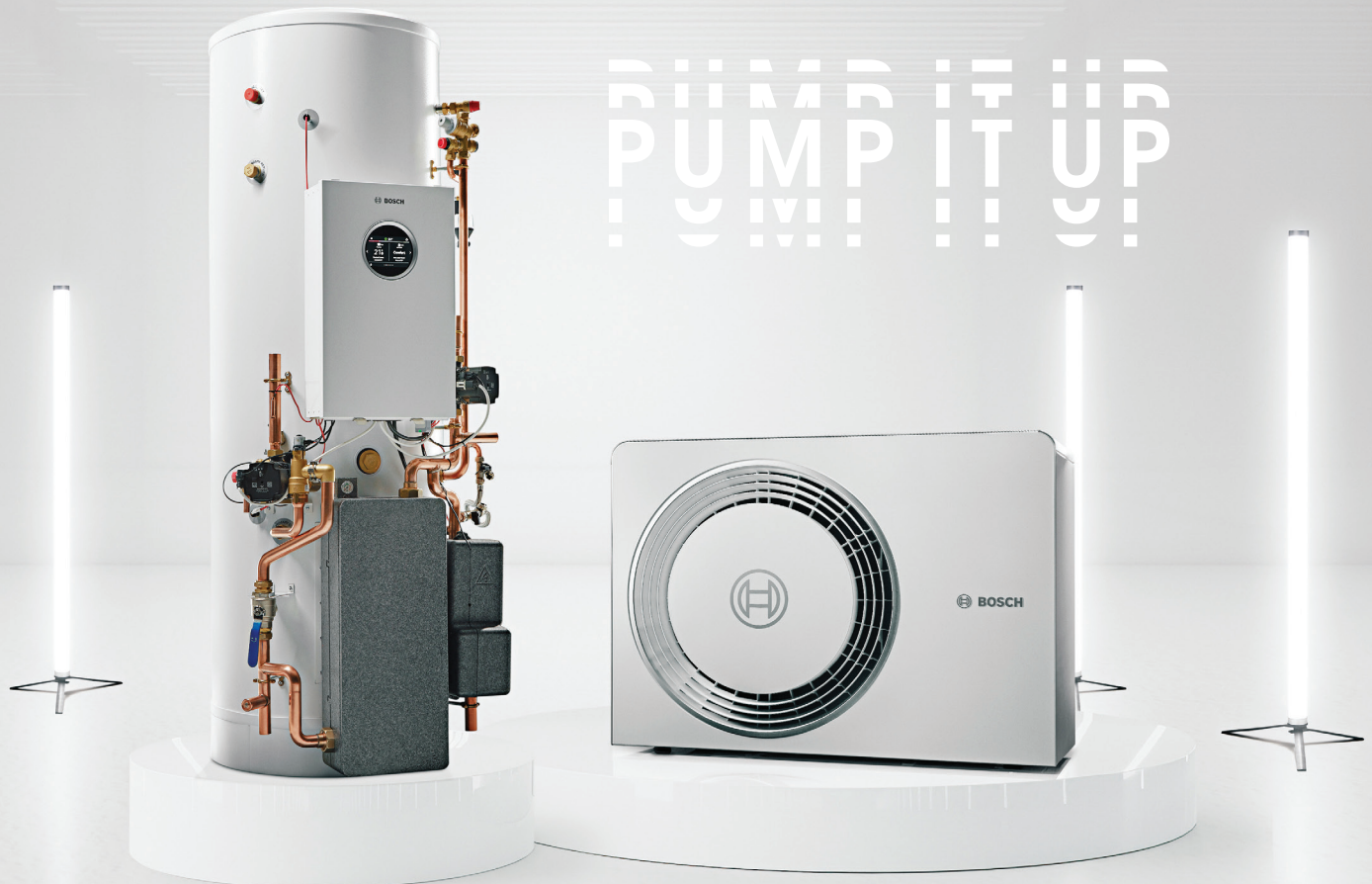




BOSCH

Compress 5800i Installer guide

The future of home heating has arrived





PUMP IT UP

Welcome to the future of heat pump technology.

A world of modern design, responsible heating and easy installation. A world where home heating looks, sounds, fits, and performs better than ever before.

Designed for Irish homes, the brand new CS5800i range is designed for new build and renovation projects alike – making it easier than ever to bring responsible heating solutions to your customers.

Contents

CS5800i outdoor unit – Overview	5
CS5800i outdoor unit – Features	6
CS5800i DHW tower unit – Overview	9
CS5800i DHW tower unit – Features	10
CS5800i pre-plumb cylinder – Overview	13
CS5800i pre-plumb cylinder – Features	14
CS5800i wall hung unit – Overview	17
CS5800i wall hung unit – Features	18
CS5800i controls	20
CS5800i training	21

Quieter, smaller, easier.

Our easier on the eye outdoor unit



A brand new heat pump for a brand new age, the CS5800i outdoor unit brings a more sustainable future to home heating. With space-saving features, a compact footprint, modern design, and easy installation all built in – it's a compact heat pump with a big impact.

It makes your life easier through its monobloc design, so you can access the control box, condenser, and evaporator easily – and carry out your installations quickly.

Your customers can relax too, knowing the CS5800i is our quietest heat pump ever and barely makes as much noise as their kitchen refrigerator.

Add to this a low global warming potential and the CS5800i outdoor unit is definitely something to get pumped about.

Key features:

Ultra quiet

With integrated diffuser

Compact

Stunning modern design and simple to install

High performance

Flow temperatures up to 75°C for wider range of Irish homes & SCOP up to 4.65

Responsible

R290 refrigerant has a low global warming potential score of only 3

Flexible

Perfect for renovation projects and new build, with a range of compatible indoor units

Design

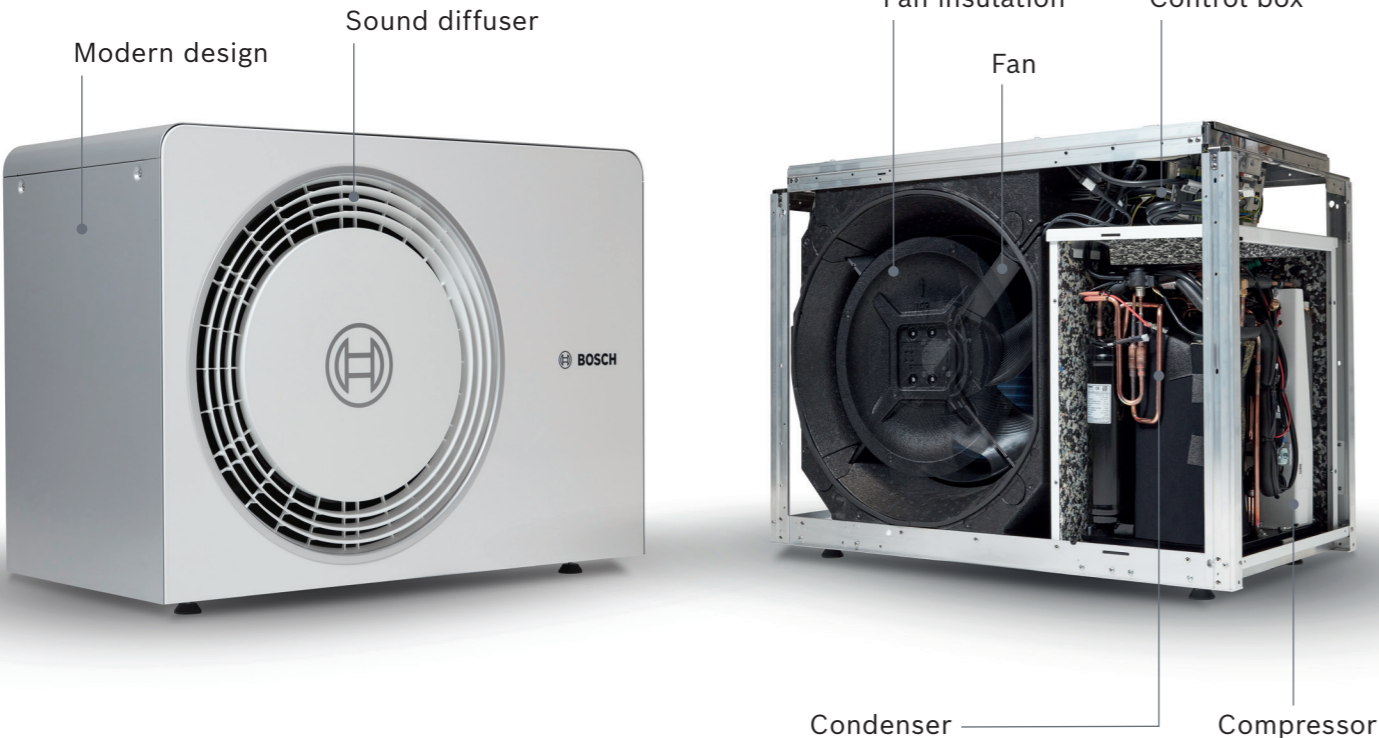
All the style and maximum reliability you've come to expect from Bosch.



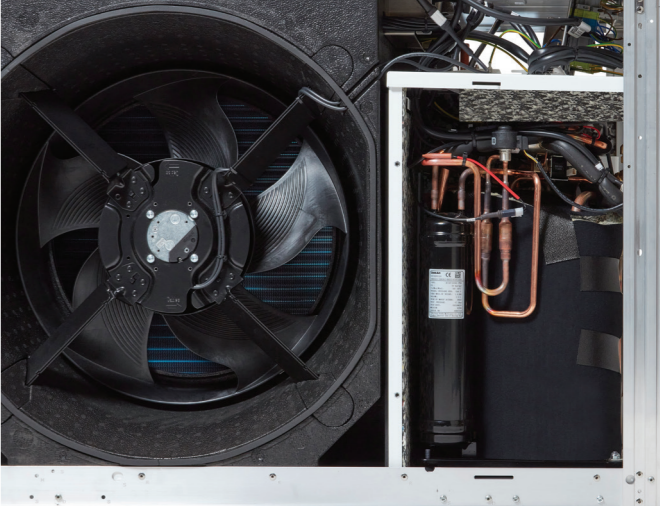
*For full terms and conditions please visit worcester-bosch.ie/guarantee-terms-and-conditions

CS5800i outdoor unit

Features



Easy to fit
 F-Gas-free fitting, with rear facing connectors and monobloc design meaning easier and much quicker installation.



Flexible siting
 Choose the best place for the unit, with flexible installation options and compatibility with most homes and heating systems, no matter the age.



Easy to access
 Just remove a few screws to get to the control box and main components.



High performance refrigerant
 R290 refrigerant delivering high performance and a future-proof choice with a global warming potential of only 3.



Our quietest outdoor unit ever
 With a built-in sound diffuser and insulated fan, the volume of this outdoor unit is almost unnoticeable.
 Producing just 40dB(A)*, somewhere between birdsong and the quiet hum of a refrigerator, your customer and their neighbours won't even know there's a heat pump hard at work. And with the sleek new design, it will compliment its surroundings too.

*Sound power level in accordance with EN 12102 (Nominal A7/W55)

Compact, connected, complete.

All-in-one freestanding indoor unit

Our CS5800i heat pump tower unit combines heating and hot water storage in a single, sleek, freestanding solution.

With no separate water tank needed and no wall hanging required, this indoor unit brings space saving style into any size of home.

Easy to install and with everything your customers need built-in, the CS5800i tower unit makes everybody's lives a little easier.

There's enough in the tank for a 4-bed home and, for extra peace of mind on those really cold nights where the heat pump needs to work harder, the back-up booster packs a punch.

Key features:

Easy installation

Hydraulic system components come pre-fitted for a simpler set-up

All-in-one heating

Single unit solution – with air vent, circulation pump, diverter valve, booster heater, expansion vessel, and hot water storage all built-in

Built-in water cylinder

Stores 180 litres of domestic hot water, without a separate tank

Connected and interactive

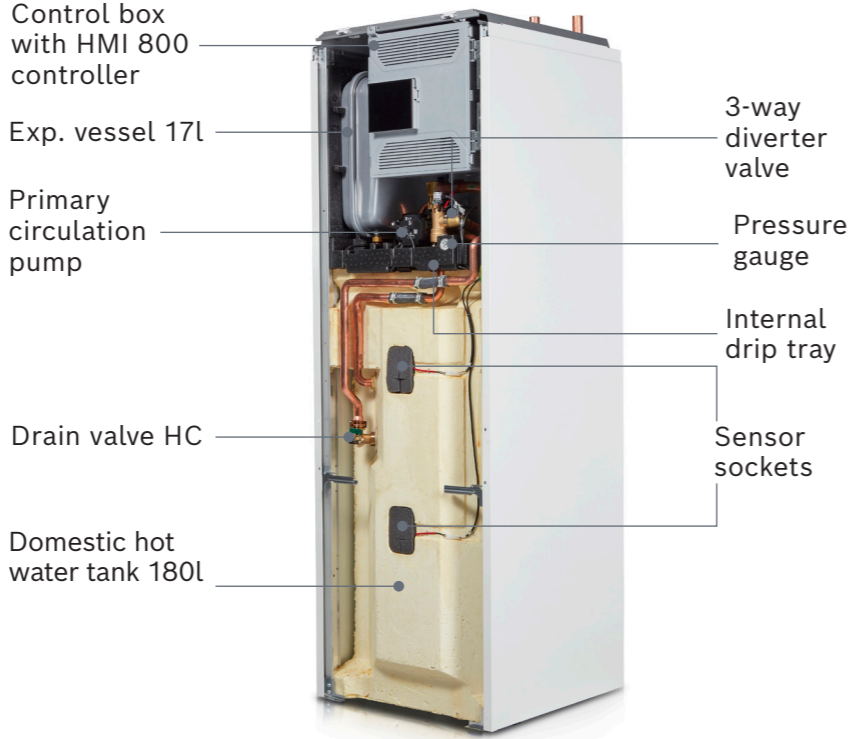
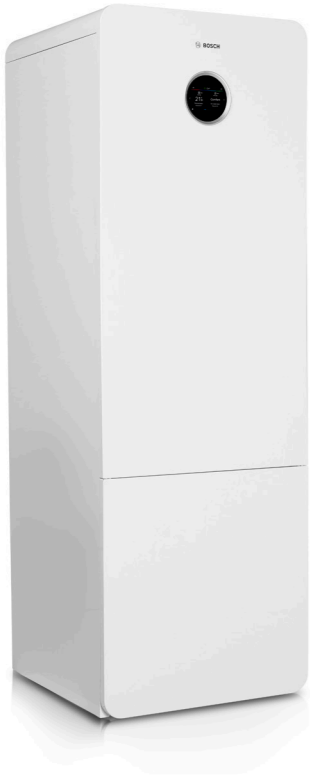
With an intuitive colour touchscreen and compatible with Connect-Key K30 and Bosch HomeCom Easy app, your customers are in control.



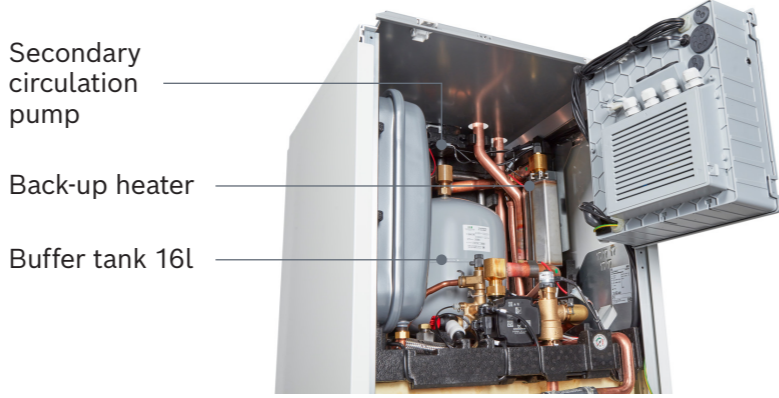
*For full terms and conditions please visit worcester-bosch.ie/guarantee-terms-and-conditions

CS5800i DHW tower unit

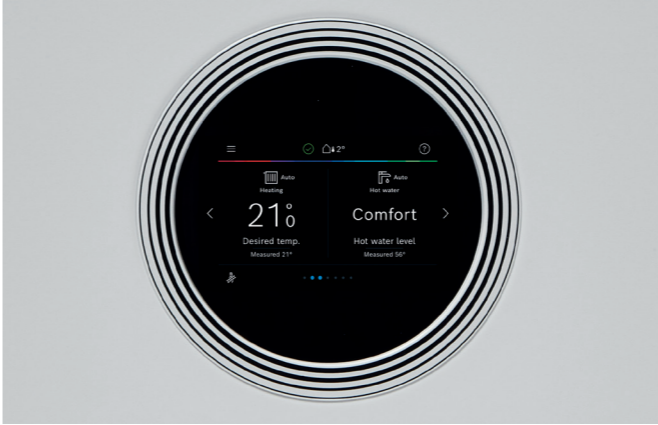
Features



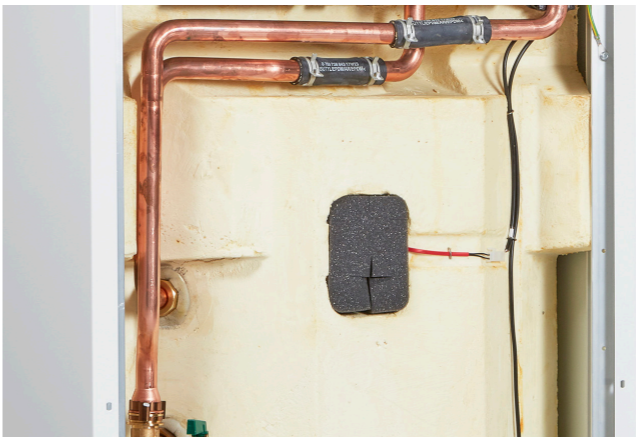
- Control box with HMI 800 controller
- Exp. vessel 17l
- Primary circulation pump
- Drain valve HC
- Domestic hot water tank 180l
- 3-way diverter valve
- Pressure gauge
- Internal drip tray
- Sensor sockets



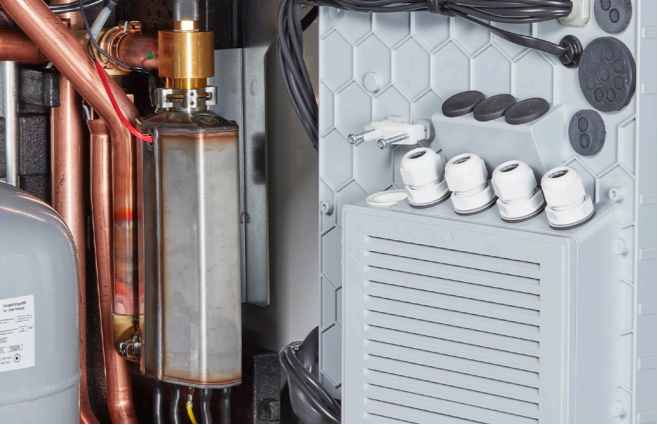
- Secondary circulation pump
- Back-up heater
- Buffer tank 16l



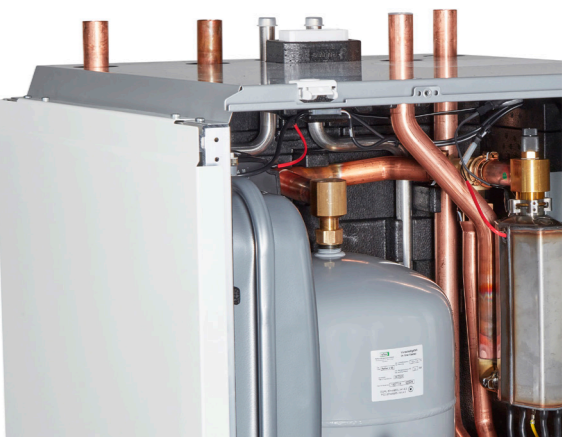
Connected controls
 The built-in colour intuitive touchscreen allows for easy configuration with the option to control heating via the Bosch HomeCom Easy app with the Connect-Key K30.



Integral hot water cylinder
 Save space with this unit which despite containing a 180 litre cylinder only uses the same floor space as a washing machine.



Back-up heater
 The CS5800i tower unit cylinder comes with a built-in 3kW electric heater, giving customers a fail-safe backup when the weather is at its coldest.



Fast to install
 This indoor solution is designed with installers in mind, to make installations quicker with integrated cylinder, micro-buffer, diverter valve, pumps, and back-up heater.

Quicker, easier, connected.

All-in-one pre-plumb cylinder

The all-new CS5800i pre-plumb cylinder is a complete 'plug and play' indoor solution, built with simple installation and your busy schedule in mind.

With technology and ease-of-use at its core, the cylinder control unit comes with Connect-Key K30 connectivity as standard – meaning easy setup and the option to control heating via the Bosch HomeCom Easy app.

Designed and built in the UK, specifically with Irish homes in mind, this cylinder can handle a wide range of domestic hot water volumes in any home – new or old, and is available in a slimline variant for air cupboard installation.



Key features:

Easy install

Faster installation with integrated micro-buffer, diverter valves, pumps and back-up heater

Compact

Space-saving, easy installations in Irish homes

Flexible

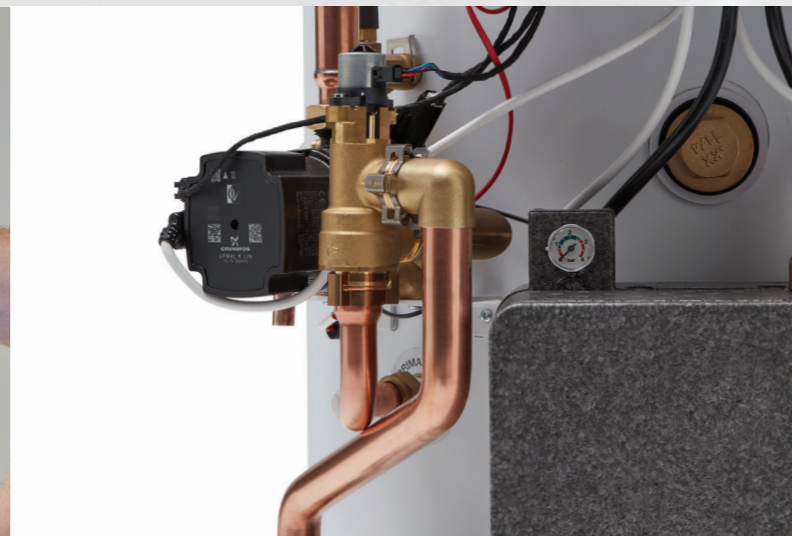
Full range of cylinder volumes for flexibility with renovations or new builds

Connected

With an intuitive colour touchscreen and compatible with Connect-Key K30 and Bosch HomeCom Easy app, your customers are in control

UK-made

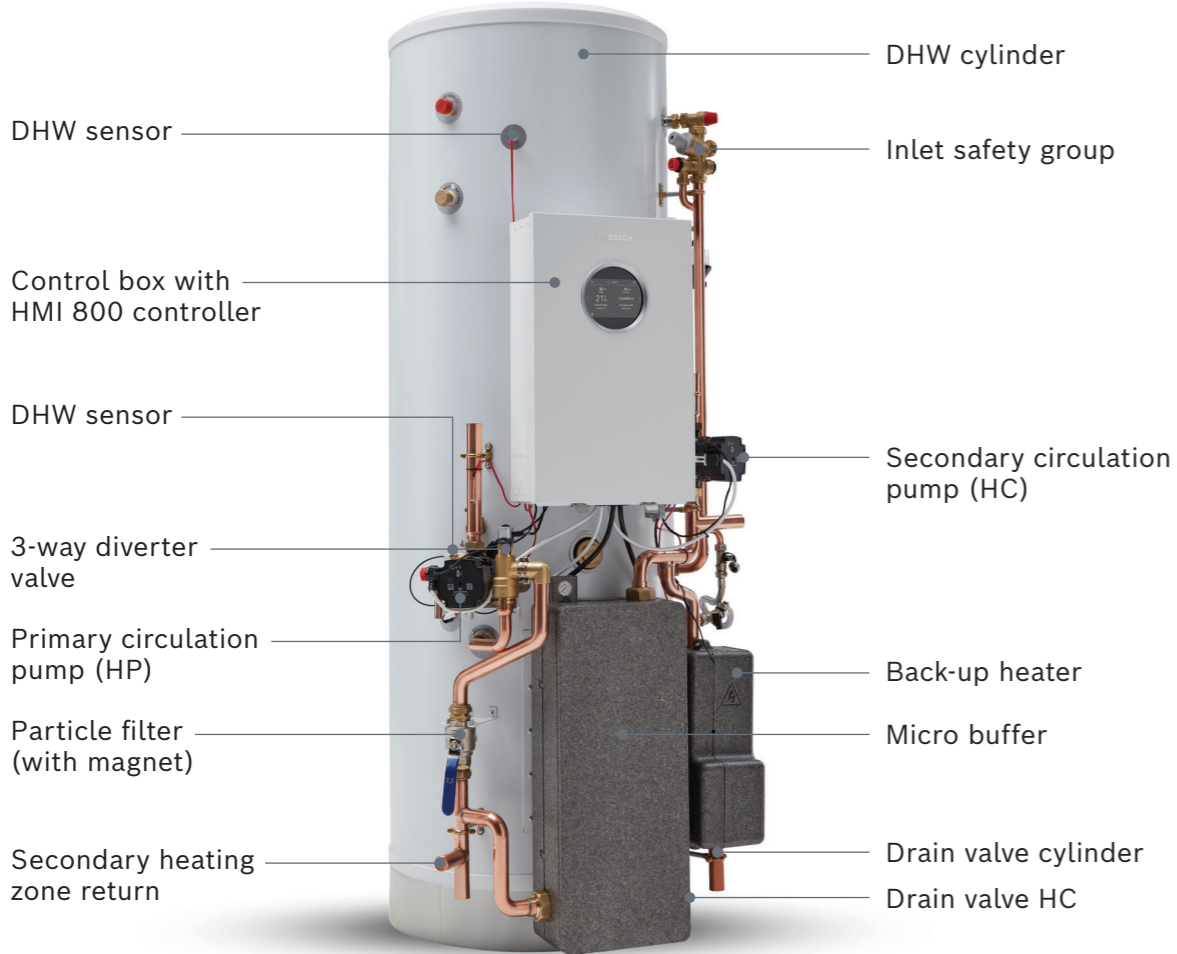
Designed and manufactured in the UK.



*For full terms and conditions please visit worcester-bosch.ie/guarantee-terms-and-conditions

CS5800i pre-plumb cylinder

Features



Easy installation

This 'plug and play' indoor solution is designed with installers in mind, to make installations quicker.

Install faster with integrated micro-buffer, diverter valve, pumps, and back-up heater.

Install anywhere with kit designed to suit new-build and renovation project installations.

Install easier with pre-fitted and accessible components.

Install smaller with all components connected to the cylinder for one compact installation.

Back-up heater

The CS5800i pre-plumb cylinder comes with a built-in 3kW electric heater, giving customers a fail-safe backup when the weather is at its coldest.

Flexible hot water solutions

Fit out homes of any size or shape, with a range of cylinders available:

- 150L slimline*
- 180L slimline
- 180L standard*
- 210L standard
- 250L standard
- 300L standard*

* Available 2024

Connectivity

Give your customers complete control wherever they are, by plugging in the Connect-Key K30 included with the CS5800i.

Download the Bosch HomeCom Easy app to control their heating directly.



Connected, compact, flexible.

Our stylish wall hung unit



The all new CS5800i wall hung unit brings simplicity and technology perfectly together, providing an alternative solution to the pre-plumbed cylinder.

Incorporating Bosch modern design alongside accessibility – with easy access, installation, and integration with existing home-heating systems – this one has the beauty and the brains.

And, with the Connect-Key K30 built in, the wall hung CS5800i has the option to control the heating via the Bosch HomeCom Easy app.

Key features:

Easy access

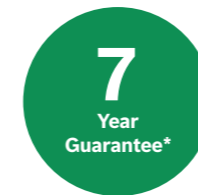
Engineer-focused design, allows immediate access to the control box

Flexible design

Ability to use third-party cylinders and components

Interactive

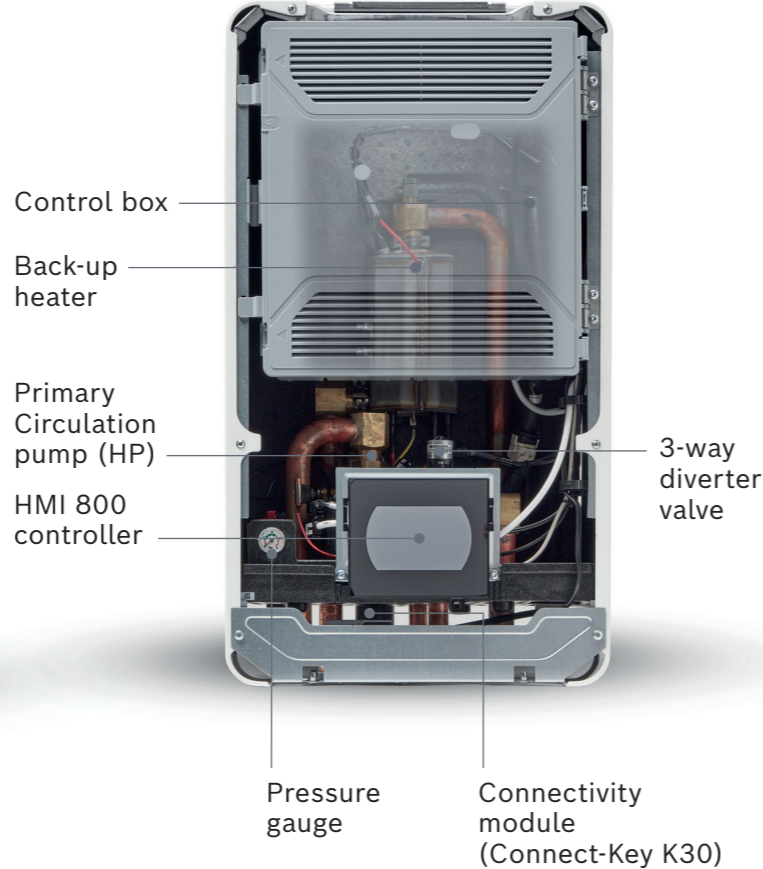
Built-in colour intuitive touchscreen for easy use



*For full terms and conditions please visit worcester-bosch.ie/guarantee-terms-and-conditions

CS5800i wall hung unit

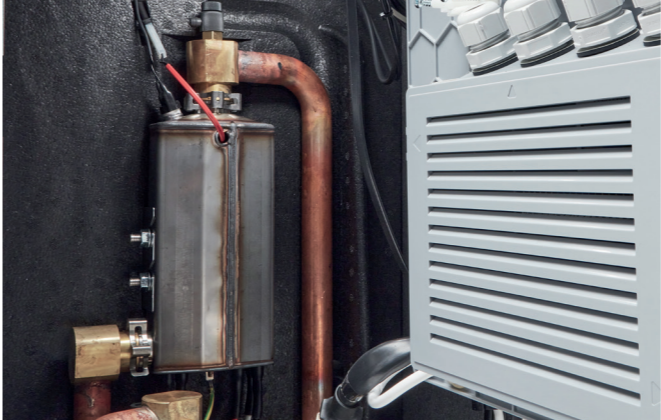
Features



Modern design

Designed and engineered to be stylish and reliable – wherever it's installed. Give efficient heating pride of place, even in the most modern customer homes.

The CS5800i also comes with a built-in colour intuitive touchscreen, for easy configuration inside the home.



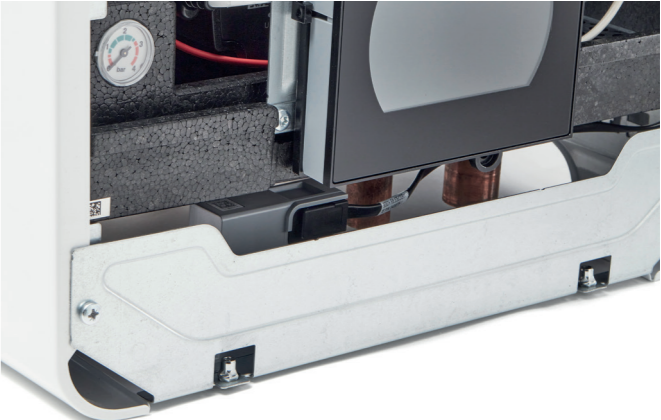
Back-up heater

The CS5800i wall hung unit comes with a built-in 3kW electric heater, which provides a fail-safe back-up when the weather is at its coldest.



Connectivity

Give your customers complete control wherever they are, by plugging in the Connect-Key K30 included in this unit. Download the Bosch HomCom Easy app to control their heating directly.



Easy to access

For servicing and installation, it's just a removal of screws to get to the control box and the other main components.

Connected and in control

Intelligent controls range



Control from anywhere with Connect-Key K30

Included as standard, simply slot in the key, download the Bosch HomeCom Easy app and connect to the wifi.

Simple to control, there's a choice of digital thermostats to suit your customers needs.

Optional accessories



CR20RF

Wireless room thermostat, which works alongside the Connect-Key K30 plugged into the CS5800i pre-plumb cylinder or wall hung unit:

- ▶ Flexible installation with wall-mount or tabletop stand
- ▶ Wireless and battery-powered thermostat
- ▶ Easily operated via the LCD display with 5 touch buttons, or with the Bosch HomeCom Easy app
- ▶ Humidity sensor.



RT800

Wired room thermostat, for the easiest and most immediate heating control at home:

- ▶ Direct control, no wifi required
- ▶ High quality 2.4" colour display with 7 touch buttons
- ▶ Access system information at the touch of a button, or with the Bosch HomeCom Easy app
- ▶ Humidity sensor.

CS5800i training

Are you ready for the responsible heating revolution?

Wherever you are in your low carbon heating journey, from starting out to adding to your heat pump expertise we can support you with these solutions.

Installing heat pumps doesn't need a specific qualification, but our complementary product training will help you get hands-on experience and understand all the features and benefits, specification, installation, and servicing.



Explore our product training



Accessories & technical data

Accessories

Part Number	Description
8738206696	Alarm buzzer
7716161061	50l buffer
7735500777	120l buffer
8738214739	INPA Short (200mm – 400mm)
8738214740	INPA Long (500mm – 10000mm)
7747204698	Dew point sensor
8738214741	Floor stand small
8738214742	Small stand covers
8738205073	Bracket kit for MM100
8750743753	Wall-mount small
7738110140	MM100 Mixer
8738206183	CANbus cable 15m
8738206184	CANbus cable 30m
8738214748	Condensation heating cable 2.5m
8738214749	Condensation heating cable 3.5m
8738214750	Condensation heating cable 5.5m
7738112943	CR20RF controller
7738112961	RT800 controller
7738112314	CR10H Thermostat
8738214418	DHW tower hot water circulation pipe
7735502289	DHW cylinder sensor R60

7736601142	Pump Group HS25/6 s BO
7736601144	Pump Group HS25/6 BO
7736601148	Pump Group HSM25/6 BO
7736601151	Pump Group HS25/6 MM100 BO
7736601155	Pump Group HSM25/6 MM100 BO

Pre-plumb cylinders

Model	Part number	Dimensions WxHxD
180L Slim	7731600271	653mm x 1708mm x 645mm
210L	7731600272	674mm x 1561mm x 747mm
250L	7731600273	674mm x 1806mm x 747mm

Clearances: Front: 50mm (600mm wall), Left/Right: 150mm, Top: 200mm, Rear: 50mm

Wall hung unit

Model	Part number	Dimensions WxHxD
CS5800i 12 E G3	8738214990	400mm x 720mm x 297mm

Clearances: Front: 800mm, Left/Right: 50mm, Top: 550mm

Tower unit

Model	Part number	Dimensions WxHxD
CS5800i 12 M SST	8738214735	600mm x 1782mm x 600mm

CS5800i outdoor units

Model	CS5800i 4 OR-S	CS5800i 5 OR-S	CS5800i 7 OR-S
Part number	8738213464	8738213465	8738213466
Power supply	230v	230v	230v
Dimension (WxHxD) mm	1100 x 800 x 540	1100 x 800 x 540	1100 x 800 x 540
Weight (Kg)	143	143	143
Clearances	Front: 2m (800mm*) Left/Right: 1m (2m to wall or 400mm*) Rear: 400mm (200mm*) *Minimum distance: The clearance can be reduced to the minimum clearance on one side and either the front or rear. There must be no house openings (windows, doors, light shafts) and electrical sources of ignition (sockets, lamps, electric switches) within the protected area.		
Sound Power (ERP - A7/W55)	40	42	42
Fuse (A)	16	16	16
Refrigerant	R290	R290	R290
Max flow temperature	75°C	75°C	75°C
SCOP @ 35°C (MCS)	4.53	4.53	4.54
SCOP @ 45°C (MCS)	3.82	3.90	3.96
SCOP @ 55°C (MCS)	3.03	3.28	3.29
Max output @-7/35 [kW]	3.92	5.42	6.71
COP max output @-7/35	2.89	2.51	2.36
Max output @7/35 [kW]	4.99	6.8	7.97
COP max output @7/35	3.59	3.16	3.07
Nominal output @7/35 [kW]	2.84	2.84	2.84
COP nominal output @7/35	4.85	4.85	4.85

System options

Output kW	Pre-plumb cylinders			Optional controls		
	Wall Hung Unit	PP Cylinder 180L Slim	PP Cylinder 210L Slim	PP Cylinder 250L Slim	RT800	CR20 RF
4	Y	Y	Y	N	Y	Y
5	Y	Y	Y	Y	Y	Y
7	Y	Y	Y	Y	Y	Y

Share

We would love to see your installations!



@WorcesterBosch



Worcester Bosch Professional



@WorcesterBoschProfessional



Worcester Bosch Group

Bosch Home Comfort

Cotswold Way
Warndon
Worcester
WR4 9SW

worcester-bosch.ie

This brochure is accurate at the date of printing, but may be superseded and should be disregarded if specification and/or appearances are changed in the interest of continued improvement. The statutory rights of the consumer are not affected.