



**BOSCH**

# Compress 3400i Installer guide

Super efficient and flexible

**7**  
Year  
Guarantee\*



Installer  
guide

 **Trustpilot**  
Our customers rate us excellent

# Compress 3400i AWS

## Flexible, future-proofed heating

Simple, space-saving, and speedy to install – the CS3400i AWS is new build and renovation-friendly, designed to suit most Irish homes. Supplying all the heating and hot water your customers need, in a much more efficient way.

Available in power outputs ranging from 4kW to 10kW as a heat pump, or 4kW to 8kW as a hybrid solution, this is the ace up your sleeve for customers on-the-fence about renewables.



## Why install the Compress 3400i AWS?



### Guaranteed

7 years peace of mind for you and your customers\*



### Super quiet

At 51dB, it's no louder than a dishwasher



### Fits almost anywhere

Wall or floor mount, or install 30m away from the indoor unit



### Planning exempt

Typically the outdoor unit needs no permission



### Connected

Remote monitoring with optional Connect-Key K30



### High output

Up to 60 degrees max. flow with energy efficient R32 refrigerant

# Split air to water

## Quiet, compact and flexible



Compact enough to be missed, quiet enough to go unnoticed, the CS3400i AWS pairs an indoor and outdoor unit together. Instead of a larger monobloc design, this smaller and flexible to site unit is the perfect fit for busier neighbourhoods. And there's a much wider choice of where you can install, as the unit typically requires no planning permission.

More flexibility comes in the range of more power outputs, from 4kW to 10kW, and the ability to choose between a standard wall-mounted setup or a hybrid solution – giving your customers the benefit of hybrid heating during cold snaps.

### Why choose Bosch?



#### Tried and tested

With over 15 years of expertise, Bosch is an established leader in heat pumps.



#### Get ahead

Training and support to go from newbie to expert.



#### End-to-end support

We've got your back – with marketing, technical, and design teams always on-hand.

# Simple to install

## Easy to control

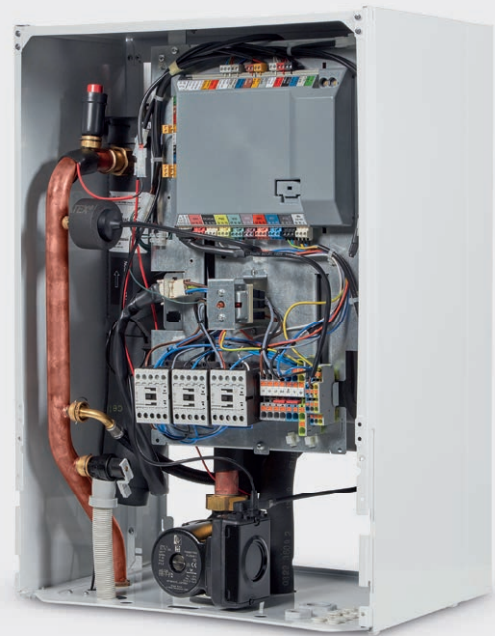


### Lightweight and compact

Small and easy to handle, including wall-mounted options, making your installation simpler and your customer's set-up quicker.

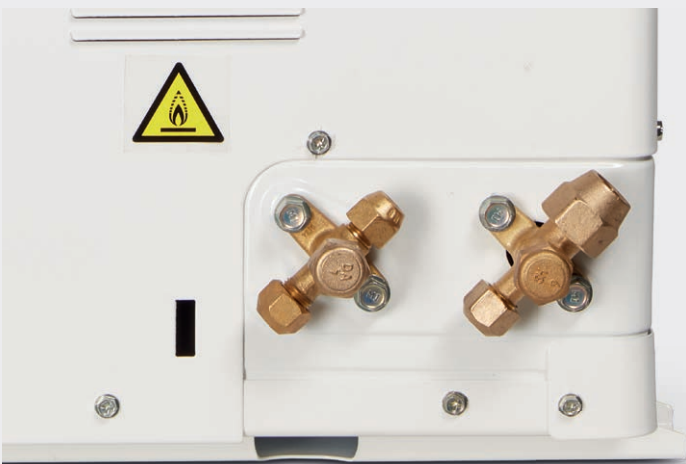
### Simple indoor unit

All essential system components in one place, including expansion vessel, pump, valves, and inline water heater, which provides a fail-safe back-up when the weather is at its coolest.



### Easy refrigerant connections and valves

Both units come pre-filled and, once connected, can be easily directed into refrigerant pipes.



## Simple wiring

Both the CS3400i indoor unit and outdoor unit are easily connected to a power supply and connected together by a communication cable.



## Hello hybrid heating

Bring boilers and heat pumps together with the hybrid unit that can be coupled with our 4-8kW outdoor units.

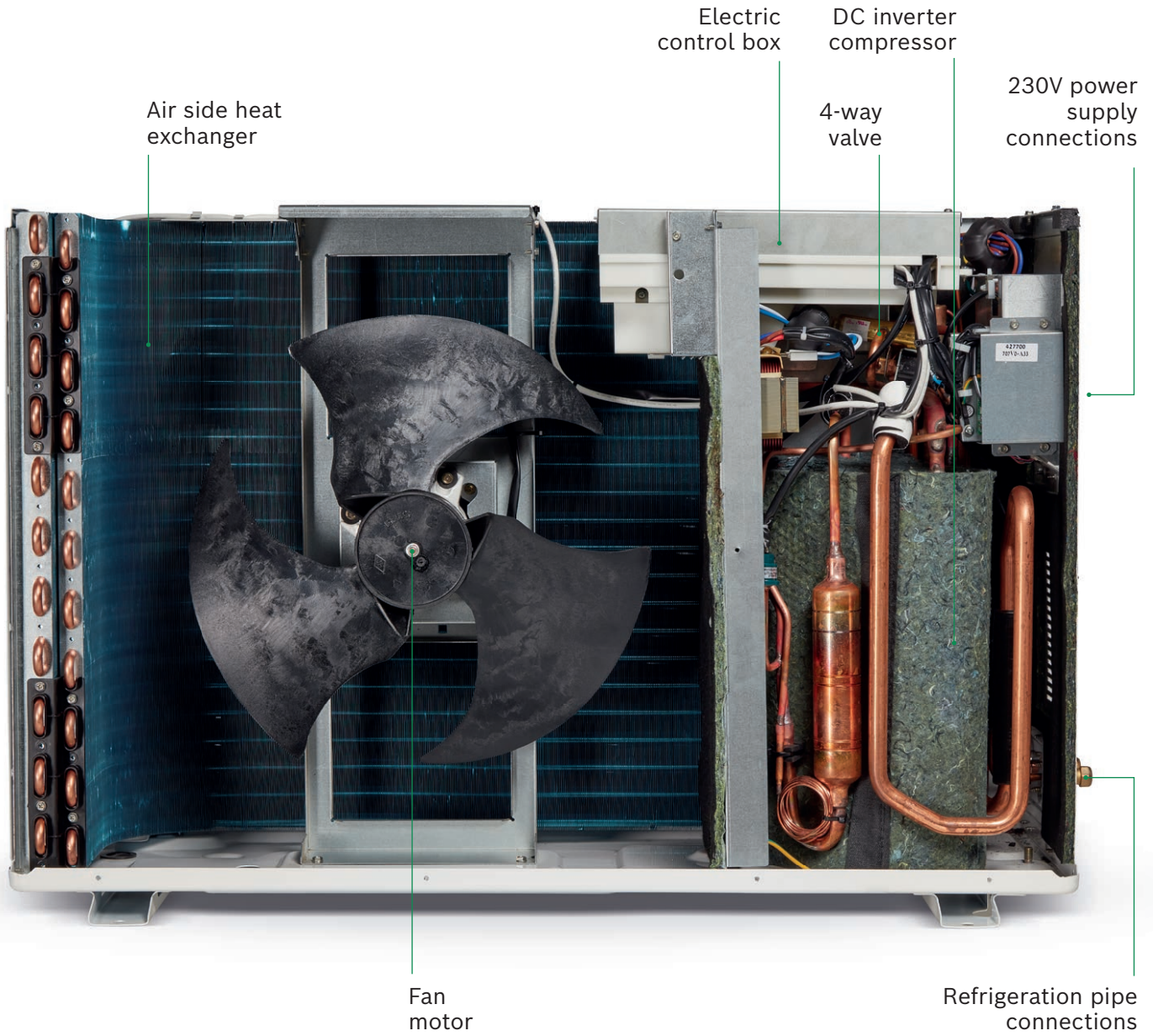


## Connected and easy

HPC 410 control as standard, for simpler commissioning. Plus simple customer controls, compatible with Connect-Key K30 and HomeCom Easy app for remote monitoring and total peace of mind.

# Outdoor unit

## The inside story



**Small but mighty, with hybrid compatibility and flexible siting options for your customers.**

Dr Navid Khordehghah, Bosch Product Manager

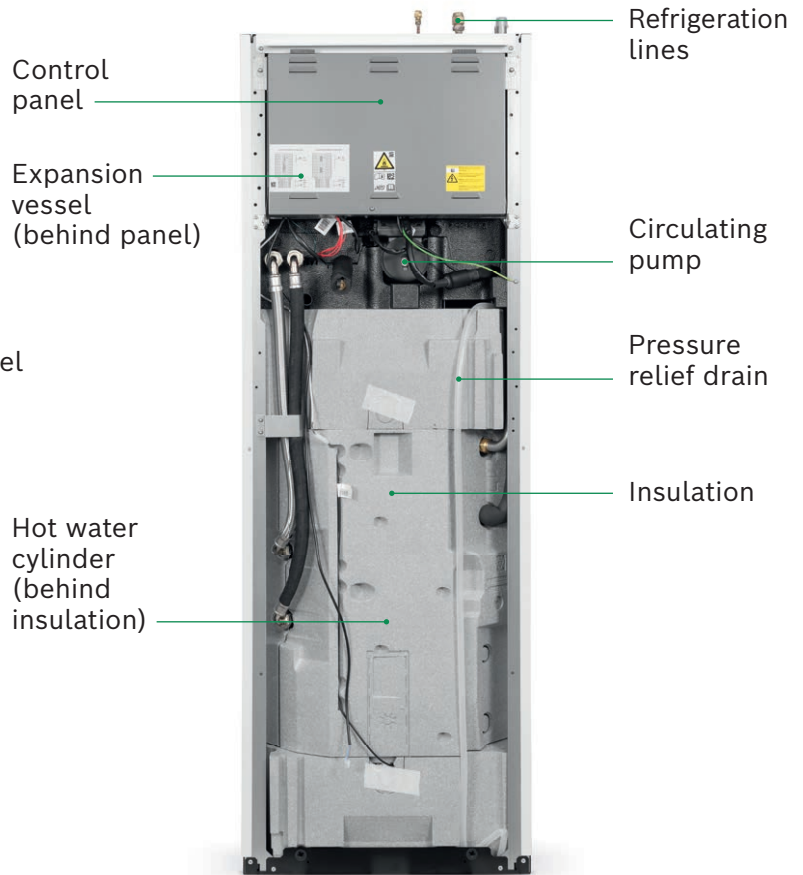
# Indoor heat pump units

## The inside story

This all-in-one **freestanding tower unit** includes a 190 litre hot water storage cylinder with key system components.



HPC 410 control panel



Control panel

Expansion vessel (behind panel)

Hot water cylinder (behind insulation)

Refrigeration lines

Circulating pump

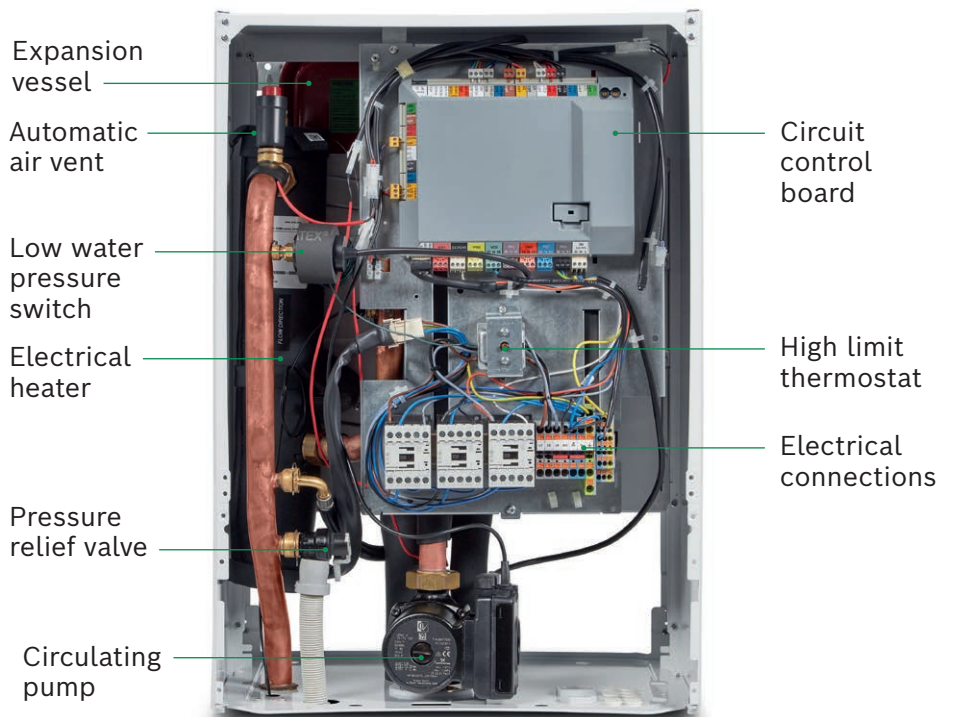
Pressure relief drain

Insulation

This **wall-mounted unit** offers a flexible range of options in combination with various hot water storage solutions.



HPC 410 control panel



Expansion vessel

Automatic air vent

Low water pressure switch

Electrical heater

Pressure relief valve

Circulating pump

Circuit control board

High limit thermostat

Electrical connections

# Indoor hybrid unit

## The inside story



Control panel

Automatic  
air vent

Low loss header  
(behind control  
board)

Mixing valve

Sensor  
connections

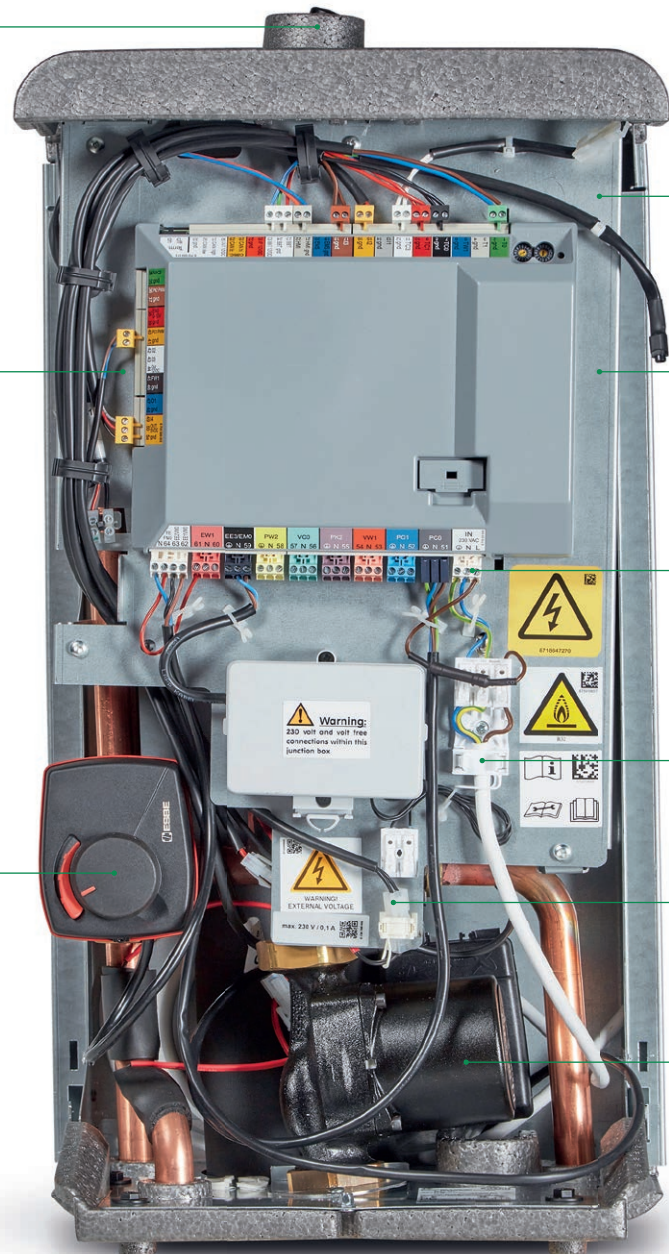
Circuit  
control board

230V connections

230V power supply

230V or volt free  
connection to boiler

Circulating pump





# System options

Flexible and future-ready, the CS3400i is available in 4 outputs: 4, 6, 8 and 10kW, and as a heat pump for a hybrid heat pump system set-up (4-8kW), making it a great choice for many homes.

## Heat pump system



## Heat pump system



## Hybrid system – with combi boiler\*



## Hybrid system – with system boiler\*\*

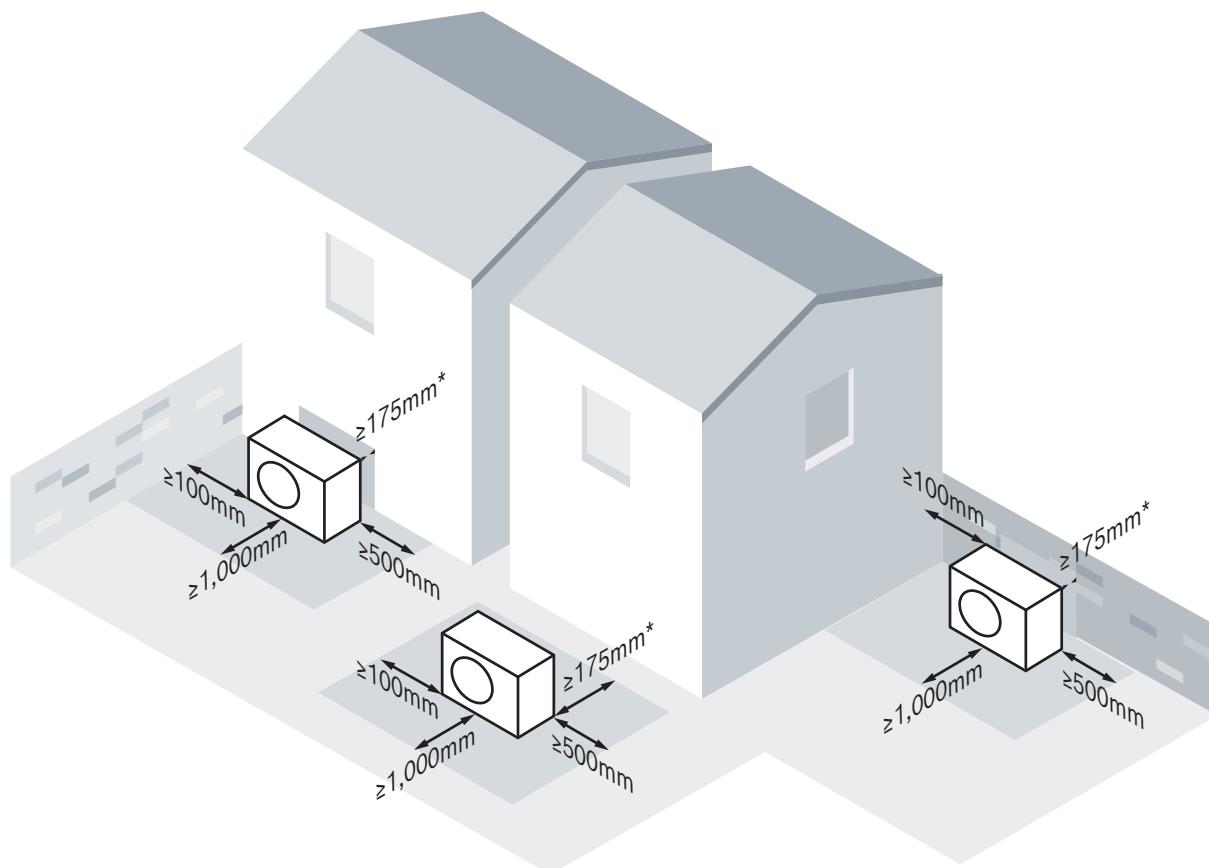


\*Compatible with natural gas, LPG and oil boilers.

\*\*Compatible with natural gas and LPG boilers with integral diverter valve.

# System set-ups

The illustration below shows some possible system configurations and the necessary minimum clearances.



## Clearances

Front: 1,000mm

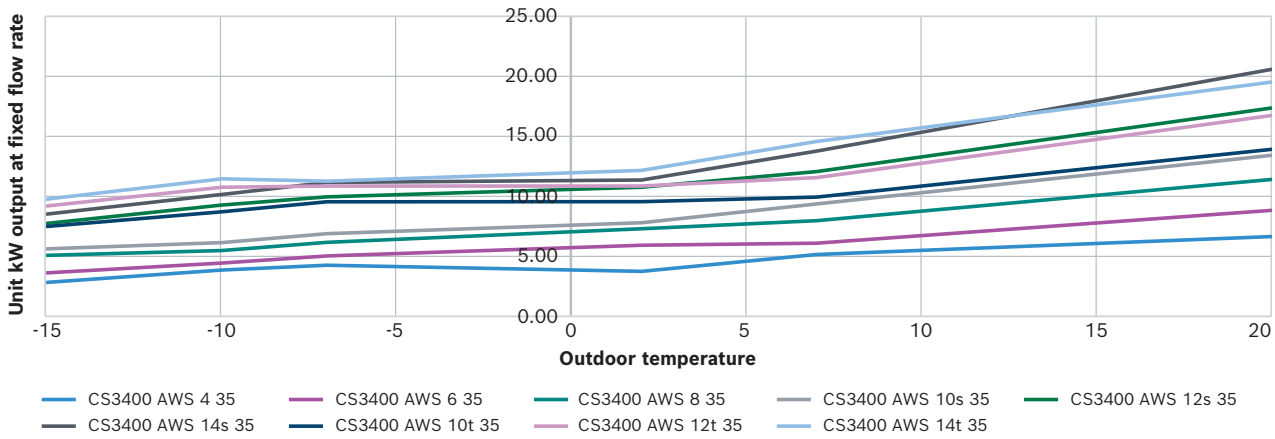
Rear: 175mm\*

Left/Right: 100mm on fan side to wall  
500mm on access side to wall

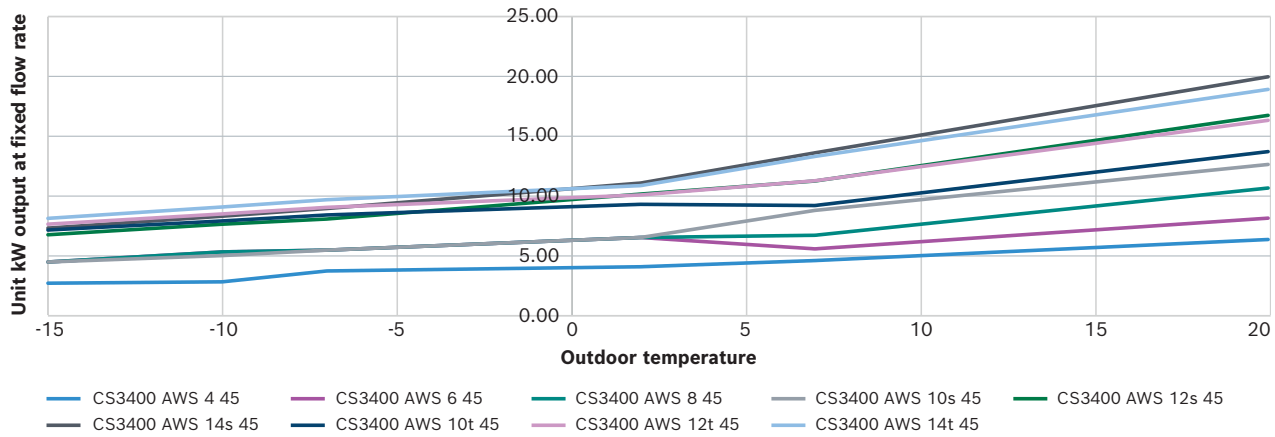
# Heating performance

These graphs explain the output performance variations of each CS3400i output. They show the water temperature achievable in radiators in relation to the outdoor temperature. This information will help you to select the most appropriate model for your customer's home.

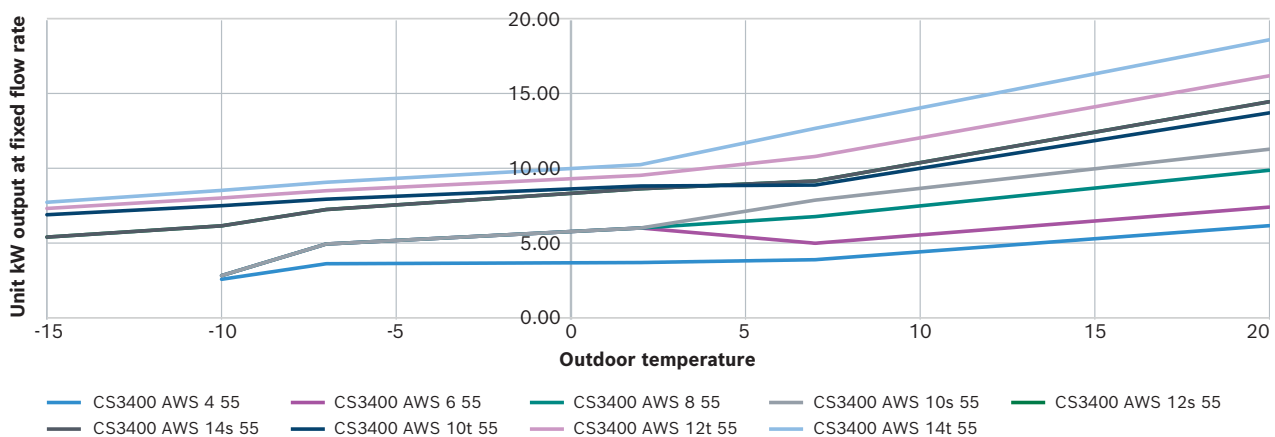
## CS3400 35°C



## CS3400 45°C



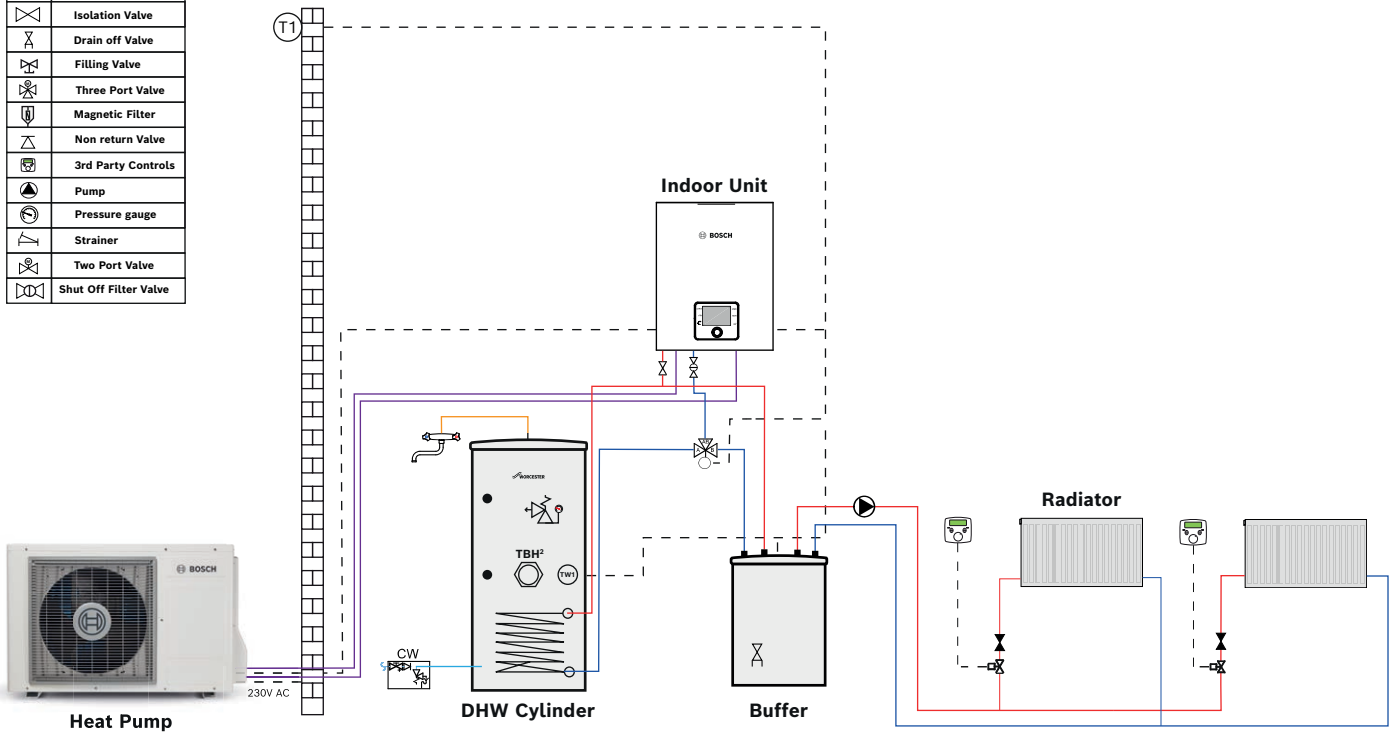
## CS3400 55°C



# Schematics

## CS3400i AW OR-S 2 X RAD, DHW, buffer with 3rd party controls

Key	Description
	T1, T0 and TW1 Sensors
	Isolation Valve
	Drain off Valve
	Filling Valve
	Three Port Valve
	Magnetic Filter
	Non return Valve
	3rd Party Controls
	Pump
	Pressure gauge
	Strainer
	Two Port Valve
	Shut Off Filter Valve

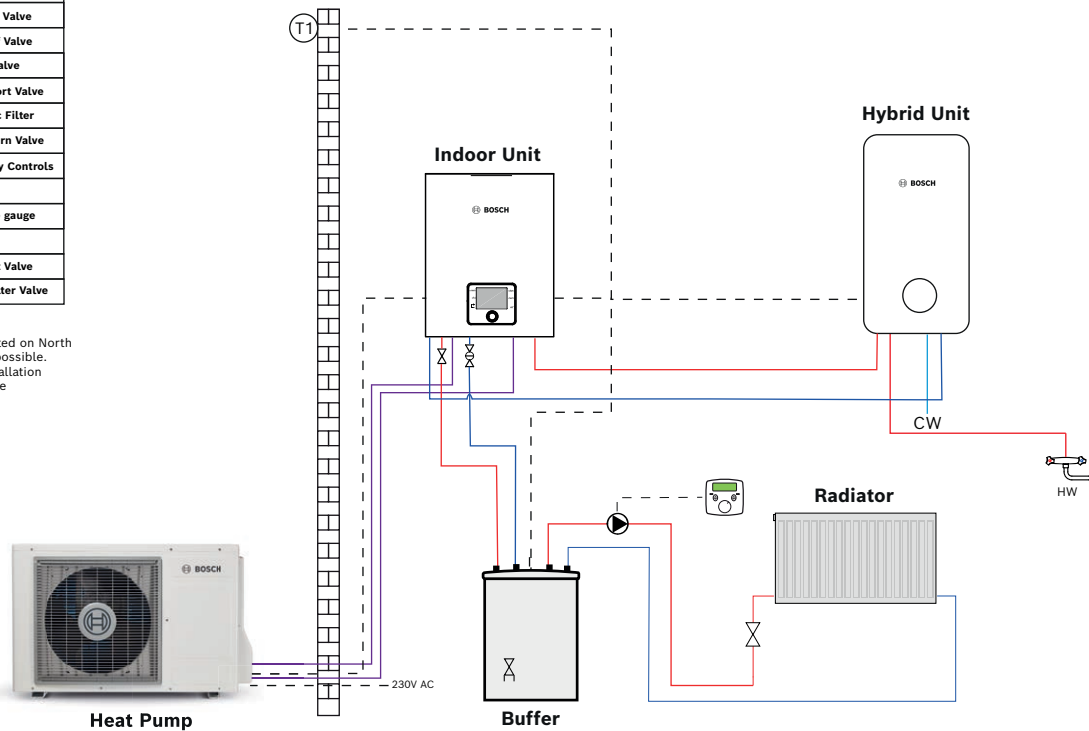


**All electrical work should be carried out by a registered engineer. Wiring must comply with the latest NSAI wiring regulations. Isolate the mains electricity supply before starting any work and observe all relevant safety precautions. Refer to all relevant product installation manuals for safety and installation instructions.** Whilst it is always our intention to fully assist, it is essential to recognise that all information given by the company is provided in good faith and based upon the information available. Connection labels may not match those of the products installed on site. We recommend that advice should always be checked with your installer, electrician or the manufacturer of the product in question. Consequently, the company cannot be held responsible for any liability relating to the use or repetition of such information or part thereof. In addition, whilst making every reasonable effort to monitor the performance and quality of our supply, installation and service network, we do not accept responsibility for the workmanship or operation of any third party company.

# CS3400i AW OR-S, Hybrid, 1 x RAD, buffer with 3rd party controls

Key	Description
	T1, T0 and TW1 Sensors
	Isolation Valve
	Drain off Valve
	Filling Valve
	Three Port Valve
	Magnetic Filter
	Non return Valve
	3rd Party Controls
	Pump
	Pressure gauge
	Strainer
	Two Port Valve
	Shut Off Filter Valve

T1 Sensor to be fitted on North facing wall where possible. Please refer to installation manual for guidance



**All electrical work should be carried out by a registered engineer. Wiring must comply with the latest NSAI wiring regulations. Isolate the mains electricity supply before starting any work and observe all relevant safety precautions. Refer to all relevant product installation manuals for safety and installation instructions.** Whilst it is always our intention to fully assist, it is essential to recognise that all information given by the company is provided in good faith and based upon the information available. Connection labels may not match those of the products installed on site. We recommend that advice should always be checked with your installer, electrician or the manufacturer of the product in question. Consequently, the company cannot be held responsible for any liability relating to the use or repetition of such information or part thereof. In addition, whilst making every reasonable effort to monitor the performance and quality of our supply, installation and service network, we do not accept responsibility for the workmanship or operation of any third party company.

# Technical data



Outdoor units	4 OR-S 8 750 722 680	6 OR-S 8 750 722 681	8 OR-S 8 750 722 682	10 OR-S 8 750 722 683
Heating capacity for A-7/W35	4.3	5.1	6.2	6.9
COP for A7/W35	4.68	4.75	4.70	4.43
ERP class/Etas acc. to EN14825 (55 °C)	A++ (125%)	A++ (126%)	A++ (126%)	A++ (126%)
ERP class/Etas acc. to EN14825 (35 °C)	A+++	A+++	A+++	A+++
Refrigerant	R32	R32	R32	R32
Max. supply flow temperature (up to A-7 °C)	60°C	60°C	60°C	60°C
Sound power level*	61dB(A)	59dB(A)	59dB(A)	59dB(A)
Max. sound power level during the night (incl. tonality)	58dB(A)	56dB(A)	56dB(A)	57dB(A)
Outdoor unit weight	50kg	66kg	66kg	66kg
Dimensions (W x D x H) mm	976x380x609	975x380x864	975x380x864	975x380x864
Power supply	230V	230V	230V	230V

\*In accordance with EN12102 (normal output with A7/W55).

Freestanding indoor tower unit	AWM 4-10 8 738 213 440
Dimensions (W x D x H) mm	600x660x1800
Weight	136kg
Electric booster heater	6kW
Expansion vessel	13.5L



Wall-mounted indoor unit	AWS 10E 7 738 602 259
Dimensions (W x D x H) mm	485x398x700
Weight	41kg
Electric booster heater	2-6kW
Expansion vessel	8L



Hybrid indoor unit	Hybrid AWS 8 738 808 679
Dimensions (W x D x H) mm	350x243x757
Weight	22kg



# Accessories

	Related accessories	Part number
<b>HP Cylinders</b>	Green Storage WB Range Heat Pump Cylinder 150	7-733-601-189
	Green Storage WB Range Heat Pump Cylinder 180	7-733-601-333
	Green Storage WB Range Heat Pump Cylinder 210	7-733-601-334
	Green Storage WB Range Heat Pump Cylinder 250	7-733-601-335
	Green Storage WB Range Heat Pump Cylinder 300	7-733-601-336
<b>Buffer Tanks</b>	50l Buffer vessel	7-716-161-061
	120l Buffer vessel	7-735-500-777
<b>Control</b>	Bosch CR10H (room thermostat)	7-738-112-314
<b>Accessories</b>	MM100 Mixer	7-738-110-140
	Bracket Kit for MM100	8-738-205-073
	3 Way Valve 28mm (Moulded)	8-738-213-355
	3 Way Valve 22mm (Moulded)	8-738-213-356
	Cable CANbus 15m 2x2x0,75	8-738-206-183
	Cable CANbus 30m 2x2x0,75	8-738-206-184
	Hybrid Filter Set	7-736-604-293
	DHW /Flow Sensor 4m	8-738-206-017
	Sensor 4m T1/T4 Nr.1133	7-719-002-853
	Pipe Refrigerant 1/2_1/4 10m	7-733-701-502
	Pipe Refrigerant 1/2_1/4 20m	7-733-701-503
	Kit Refrigerant Pipe 1/4_5/8 20m	7-716-842-659
	Heating Cable Kit	7-738-602-276
	Floor Mounting Kit	7-716-161-065
	Wall Mounting	7-747-222-358
	Connect-Key Set K30	8-750-742-716
	<b>Pump Group</b>	Pump Group HS25/6 s BO
Pump Group HS25/6 BO		7-733-601-144
Pump Group HSM25/6 BO		7-733-601-148
Pump Group HS25/6 MM100 BO		7-733-601-151
Pump Group HSM25/6 MM100 BO		7-733-601-155
<b>Pump Group Accessories</b>	Accessory HKV 2/25/25 Manifold for 2 Pump Groups	8-718-599-377
	Accessory HKV 2/25/32 Manifold for 3 Pump Groups	8-718-599-379
	Accessory WHY/HKV 2/25/25 Manifold for 2 Pump Groups with LLH	8-718-599-383
	LLH Accessory WHY DN25	8-718-599-384
	Standalone LLH Accessory WHY 80/60	8-718-599-385
	Wall Hung Installation Set 1	6-790-047-0
	Wall Hung Installation Set 2 (Heating Circuit)	6-790-047-1
	Wall Hung Installation Set 3	6-790-047-2
Thermocouple TB1	7-719-002-255	

# Training

## Ready for a heating revolution?

Wherever you are in your low carbon heating journey, from starting out to adding to your heat pump expertise, we can support you.

Heat pumps should only be installed, brought into operation and maintained by a competent professional.






Our training courses will help you get hands-on experience and understand all the features and benefits, specification, installation, and servicing of our products.



Explore our product training

# Share

We would love to see your installations!

-  Worcester Bosch Professional
-  @WorcesterBoschProfessional
-  @WorcesterBosch
-  Worcester Bosch
-  Worcester Bosch Group

## Bosch Home Comfort

Cotswold Way  
Warndon  
Worcester  
WR4 9SW

[worcester-bosch.ie](http://worcester-bosch.ie)

This brochure is accurate at the date of printing, but may be superseded and should be disregarded if specification and/or appearances are changed in the interest of continued improvement. The statutory rights of the consumer are not affected.