

# Greenstar CDi Compact Installer guide

Compact home comfort

**10**  
Year  
Guarantee\*

Dave



# Greenstar CDi Compact

## Our most versatile combi

Punching well above its weight, the Greenstar CDi Compact is a small boiler delivering high hot water flow rates – perfectly suited for busy homes. With full-width rear piping as standard and a pre-plumbing jig, it's flexible enough for any installation.

The versatile and compact boiler choice, with enough punch for small and medium sized homes.



## Compact comfort

The fit-and-forget boiler which slots easily into a 300mm-deep cupboard gives you the flexibility to meet plenty of customer demands at once.

Here's what installers have to say...

**By far the best boiler... can go anywhere and isn't too heavy either.**

Jason @ J & S Plumbing Ltd,  
Lincolnshire

**The cupboard fit size, price point and reliability ticks all the boxes for ourselves as installers, and our customers.**

Jon @ Aquila Heating & Plumbing,  
Cheshire

**We choose to fit the CDi Compact range due to its exceptional reliability and ease of installation, a first-class boiler.**

Steven @ Morgans Plumbing & Heating Ltd,  
Shropshire

### Why install the Greenstar CDi Compact?

<p><b>Guaranteed</b> 10 years peace of mind for your customers*</p>	<p><b>Installer-friendly</b> Full-width rear piping and pre-plumbing jig</p>	<p><b>Compact</b> Just 280mm deep, fits in a standard kitchen cupboard</p>
<p><b>Versatile</b> Suits many homes, up to 36kW hot water output</p>	<p><b>Convenient</b> Siphonic condensate disposal</p>	<p><b>Efficient</b> 94% central heating efficiency</p>



**The CDi Compact is perfect if you're looking for quality and reliability in a compact package.**

Dave @ DCB Plumbing & Heating,  
Yorkshire

\*Terms and conditions apply, visit the website for more information.

# Functionality and flexibility

## Easy access components

A front-facing PRV, an easily accessible air vent and a plate heat exchanger design offering single-screw removal enables straightforward access to critical components.



## Flexible controls

Compatible Bosch EasyControl, Greenstar Comfort and Sense controls match the guarantee of the boiler when installed at the same time.



**The CDi Compact is a superbly versatile boiler, perfectly balancing compactness, power and installation ease.**

Nick Davies, Worcester Bosch Lead Product Manager

## WB7 heat exchanger

The compact heat exchanger allows for the CDi Compact to be fitted inside a standard-sized kitchen cupboard, offering a greater surface area which delivers hot water performance and 94% central heating efficiency.



## Fascia panel display

Clear display for diagnostic, operational and commissioning information with visible analogue pressure gauge for familiarity and ease of use. Controls can fit into the middle of the fascia panel for further optimised control.



## Wall-mounting jig

This feature allows installers to pre-plumb all seven boiler connections during installation and provides rear piping as standard. Included is a drop-lock expansion vessel which can be simply seated onto the hydraulic unit.



## Pre-heat accessory

An optional accessory, the Domestic Hot Water Pre-Heat Kit allows the CDi Compact to be installed in a solar thermal system or any DHW pre-heat technology, accepting incoming pre-heated mains water up to 60° C.

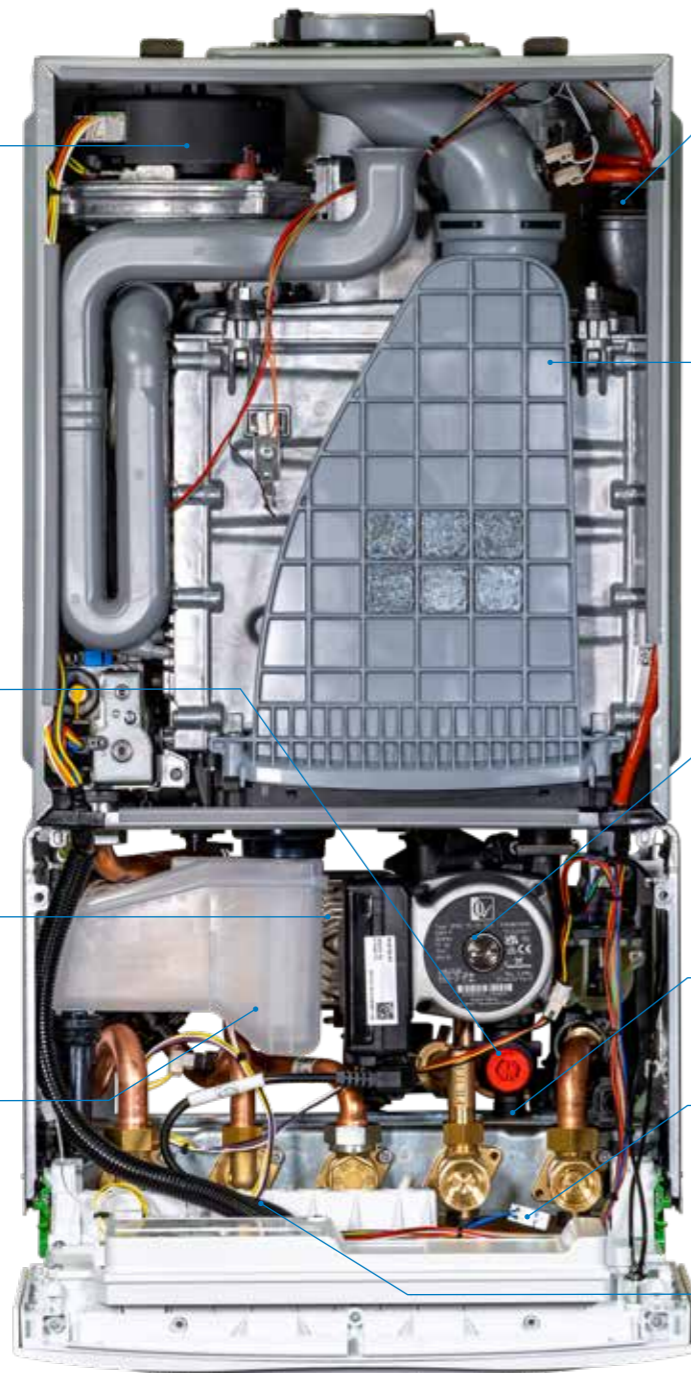
# The inside story

Fan delivering up to 36kW hot water output at 6m maximum flue length (60/100mm)

PRV can be accessed and removed in seconds

Secondary plate heat exchanger, simple to remove with just one screw

High volume siphon for frozen condensate peace of mind



Easily accessible air vent

Aluminium/silicon WB7 heat exchanger

Low energy ErP modulating pump

Keyed filling link as standard

DHW pre-heat optional accessory

230V controls and mains interface

# Technical data

Model	CDi Compact 28kW	CDi Compact 32kW	CDi Compact 36kW
<b>Part number</b>	7 733 600 054 - NG 7 733 600 057 - LPG	7 733 600 055 - NG 7 733 600 058 - LPG	7 733 600 056 - NG 7 733 600 059 - LPG
<b>ErP space heating efficiency class</b>	A / 94%	A / 94%	A / 94%
<b>ErP hot water efficiency class</b>	A	A	A
<b>Dimensions</b>	Width	390mm	390mm
	Height	690mm	690mm
	Depth	280mm	280mm
<b>Clearances</b>	Above flue	30mm*	30mm*
	Sides	5mm	5mm
	Below	200mm	200mm
	Front	20mm**	20mm**
<b>Flow rate at the hot water (40°C ΔT)</b>	10 l/min***	11 l/min***	13 l/min***
<b>Flow rate at the hot water (35°C ΔT)</b>	11.4 l/min	13.1 l/min	15 l/min
<b>Output kW to central heating (CH)</b>	7kW-24kW	7kW-24kW	7kW-24kW
<b>Sound power level dB(A)</b>	52	52	52
<b>Maximum flue length (60/100mm)</b>	6m horizontal & 6m vertical	6m horizontal & 6m vertical	6m horizontal & 6m vertical

\* Or measured 170mm from the top of the boiler cabinet.

\*\* 20mm from a removable cupboard door, 600mm from a fixed surface for servicing. Same clearances for ventilated and unventilated compartments. 450mm front clearance to a fixed surface is permitted if a) 300mm clearance on one side is guaranteed b) the bottom of the boiler is between 1000mm and 1500mm from the ground and c) 450mm front clearance is maintained from ground level to boiler.

\*\*\* Minimum pressure required to achieve maximum flow rate = 1.6bar.

Related accessories	Part number
Vertical Pre-Piping Assembly Kit	7 733 601 250
Greenstar System Mini Filter 22mm	7 733 600 266
Greenstar System Filter 22mm	7 733 600 236
Greenstar System Filter 28mm	7 733 600 237
Remote PRV Kit	7 733 601 314
Keyless Filling Link	7 716 192 610
DHW Pre-heat Kit	7 716 192 735
Greenstar Comfort I RF	7 733 600 001
Greenstar Comfort II RF	7 733 600 002
Greenstar Comfort II RF System Care Pack	7 733 601 214

60/100mm flues	Part number
Standard Telescopic Flue and Terminal (White)	7 716 191 082
Extension Flue Kit (960mm)	7 716 191 083
Short Flue Extension (220mm)	7 716 191 133
90° Flue Bend	7 716 191 084
45° Flue Bend	7 716 191 085
Support Bracket Kit	7 716 191 177
Vertical Flue Kit	7 719 002 430

# Get in touch

## Sales

Tel: 0330 123 9669

Email: [sales.bosch@uk.bosch.com](mailto:sales.bosch@uk.bosch.com)

## Technical Helpline (Pre & Post Sales)

Tel: 0330 123 3366

Email: [technical-advice@uk.bosch.com](mailto:technical-advice@uk.bosch.com)

## Spare Parts

Tel: 0330 123 9779

Email: [spares.mailbox@uk.bosch.com](mailto:spares.mailbox@uk.bosch.com)

## Controls Helpline

Tel: 0330 123 3641



## Training

Tel: 0330 123 0166

Email: [training@uk.bosch.com](mailto:training@uk.bosch.com)

[worcester-bosch.co.uk/eacademy](http://worcester-bosch.co.uk/eacademy)

# Share

We would love to see your installations!



Worcester Bosch Professional



@WorcesterBoschProfessional



@WorcesterBosch



Worcester Bosch



WorcesterBoschHeating

## Worcester Bosch

Cotswold Way

Warndon

Worcester

WR4 9SW

[worcester-bosch.co.uk](http://worcester-bosch.co.uk)

Calls to and from Bosch Thermotechnology Ltd may be recorded for training and quality assurance purposes. Worcester Bosch is a brand name of Bosch Thermotechnology Ltd. This brochure is accurate at the date of printing, but may be superseded and should be disregarded if specification and/or appearances are changed in the interest of continued improvement. The statutory rights of the consumer are not affected.

