

Compress 3400i Installer guide

Compact and flexible

7
Year
Guarantee*



Installer
guide

Compress 3400i AWS

Flexible, electrified heating

Simple, space-saving, and speedy to install – the CS3400i AWS is new build and renovation-friendly, designed to suit most UK homes. Supplying all the heating and hot water your customers need, in an efficient way.

Available in power outputs ranging from 4kW to 10kW as a heat pump, or 4kW to 8kW as a hybrid solution, this is the ace up your sleeve for customers on-the-fence about electrified home heating.



Why install the Compress 3400i AWS?



Guaranteed
7 years peace of mind for you and your customers*



Quiet
From 59dB, it's no louder than a dishwasher



Fits almost anywhere
Wall or floor mount, or install up to 30m away from the indoor unit



Planning exempt
The outdoor unit typically needs no planning permission



Connected
Control your heating from anywhere with Connect-Key K30[^] and HomeCom Easy app.



High output
Up to 60 degrees max. flow with energy efficient R32 refrigerant

Split air to water

Quiet, compact and flexible



Compact enough to be missed, quiet enough to go unnoticed, the CS3400i AWS pairs an indoor and outdoor unit together. Instead of a larger monobloc design, this smaller and flexible to site unit is the perfect fit for busier neighbourhoods. And there's a much wider choice of where you can install, as the unit typically requires no planning permission.

More flexibility comes in the range of more power outputs, from 4kW to 10kW, and the ability to choose between a standard wall-mounted setup or a hybrid solution – giving your customers the benefit of hybrid heating during cold snaps.

Why choose Worcester Bosch?



Tried and tested

With over 15 years of expertise, Bosch is an established leader in heat pumps.



Get ahead

Training and support to go from newbie to expert.



End-to-end support

We've got your back – with marketing, technical, and design teams always on-hand.

Simple to install

Easy to control



Lightweight and compact

Small and easy to handle, including wall-mounted options, making your installation simpler and your customer's set-up quicker.

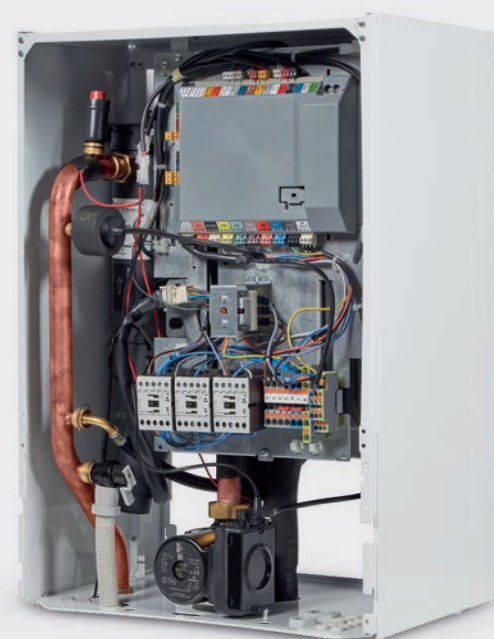
Simple wiring

Both the CS3400i indoor unit and outdoor unit are easily connected to a power supply and connected together by a communication cable.



Simple indoor unit

All essential system components in one place, including expansion vessel, pump, valves, and inline water heater, which provides a fail-safe back-up when the weather is at its coolest.



Complete control

The 3400 comes with the HPC410 control as standard, with the option to add the CR11H as the room thermostat for higher comfort and efficient.



The Connect-Key K30 is an optional accessory, enabling end users to control their heating system via the HomeCom Easy app*.



Easy refrigerant connections and valves

Both units come pre-filled and, once connected, can be easily directed into refrigerant pipes.

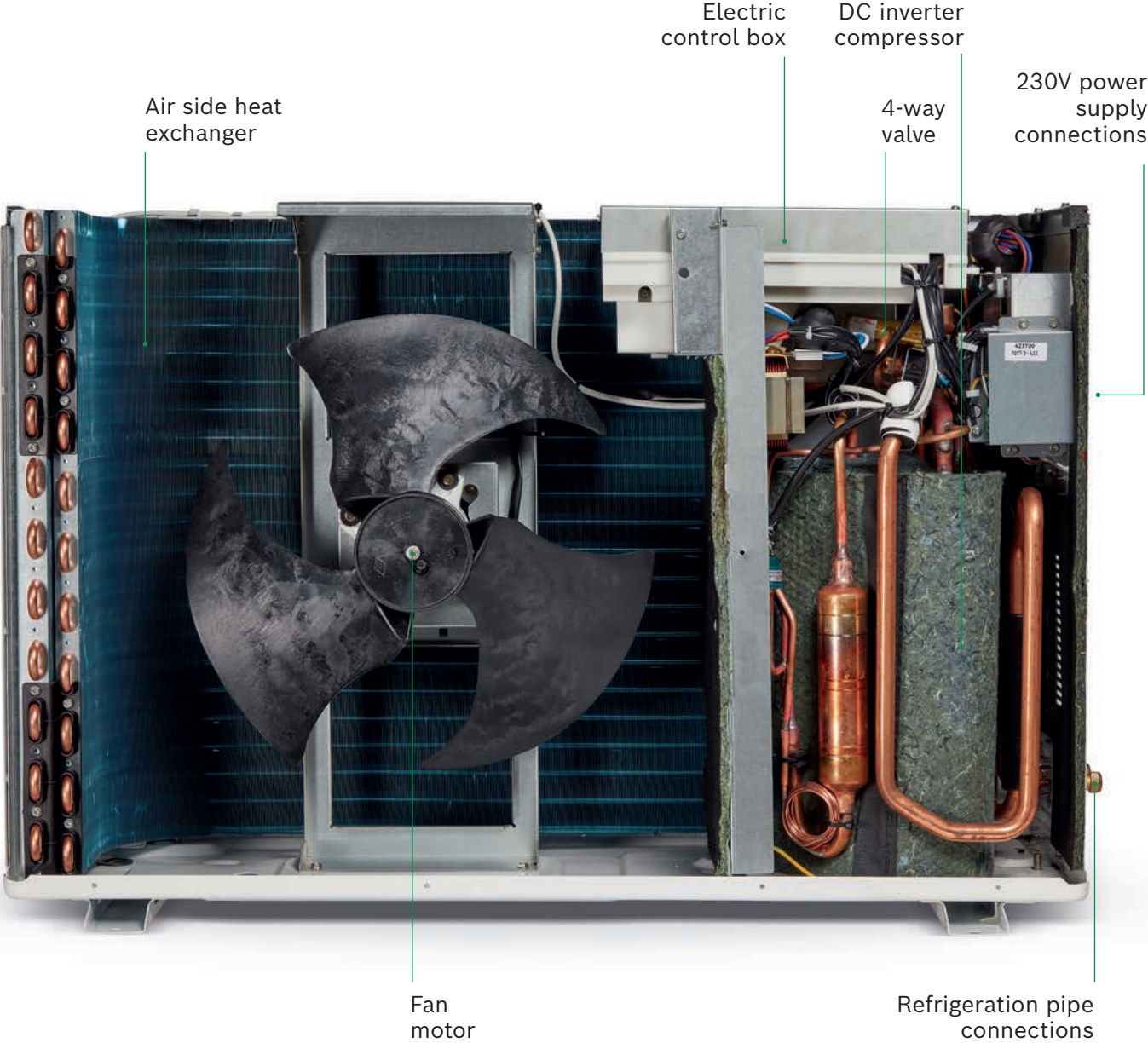
Hello hybrid heating

Bring boilers and heat pumps together with the hybrid unit that can be coupled with our 4-8kW outdoor units.



Outdoor unit

The inside story



Small but mighty, with hybrid compatibility and flexible siting options for your customers.

Dr Navid Khordehgah,
Worcester Bosch Product Manager

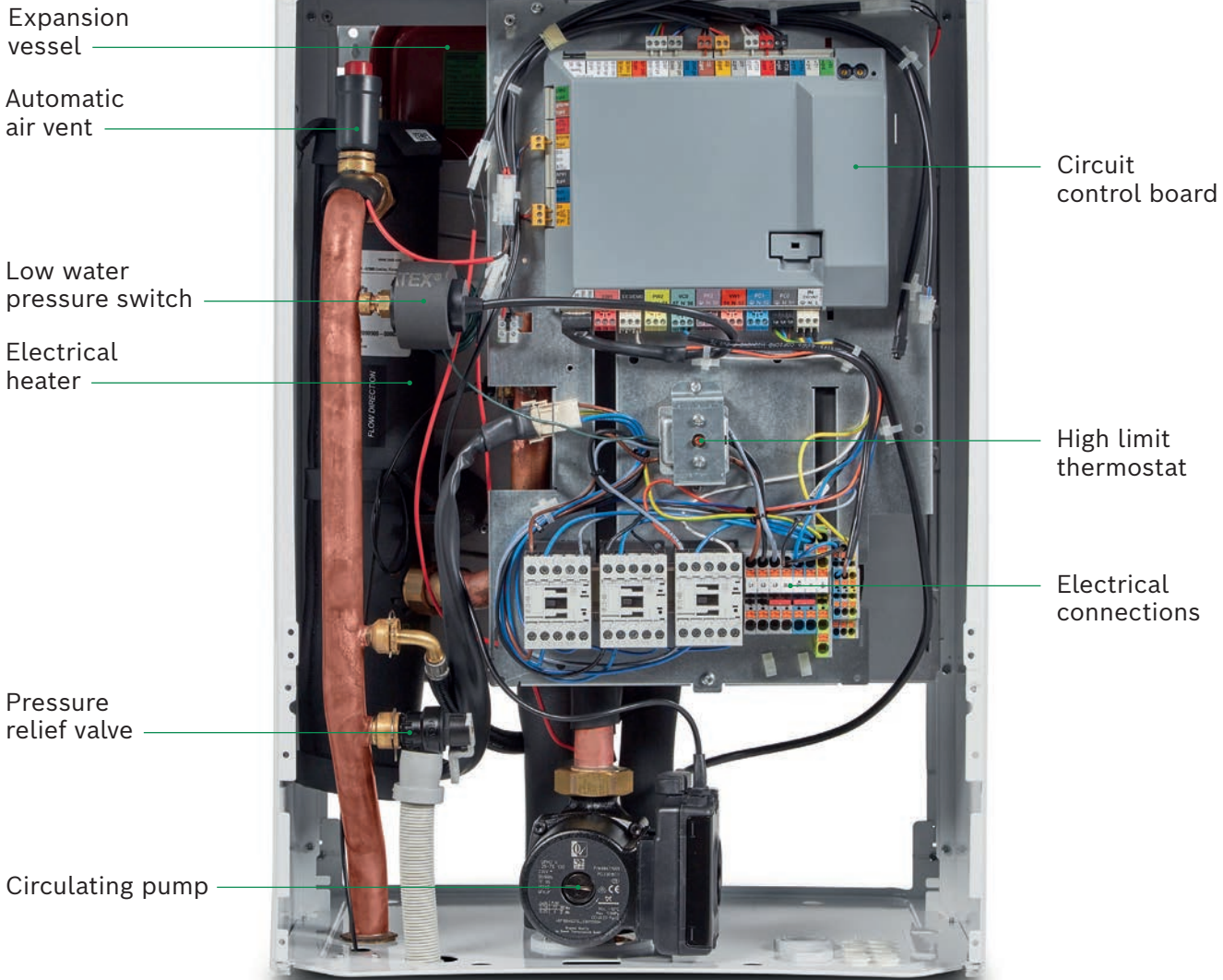
Indoor heat pump unit

The inside story

This wall-mounted unit offers a flexible range of options in combination with various hot water storage solutions.



HPC 410 control panel



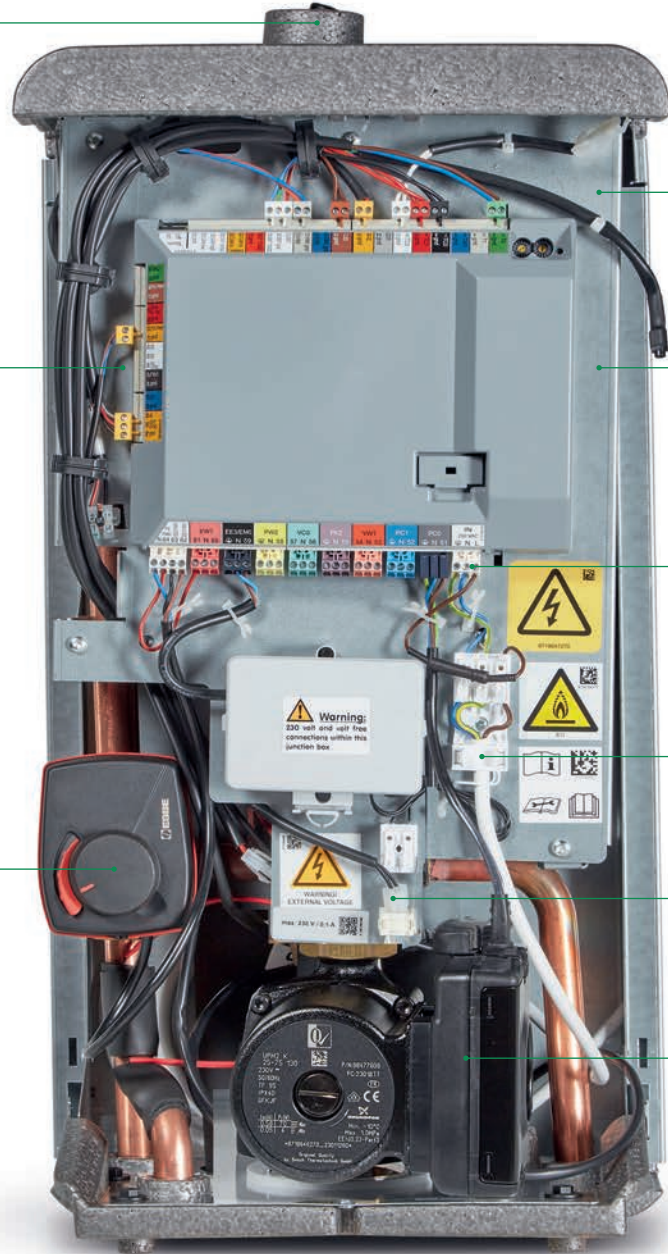
Indoor hybrid unit

The inside story



Control panel

Automatic air vent



Sensor connections

Circuit control board

230V connections

230V power supply

230V or volt free connection to boiler

Circulating pump

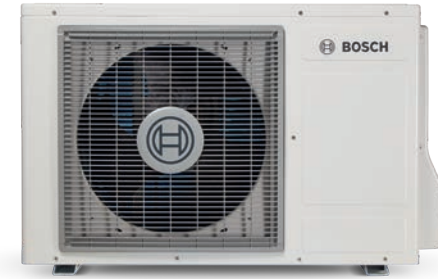
Low loss header (behind control board)

Mixing valve

System options

Flexible electrified heating, the CS3400i is available in 4 outputs: 4, 6, 8 and 10kW, and as a heat pump for a hybrid heat pump system set-up (4-8kW), making it a great choice for many

Heat pump system



+



+

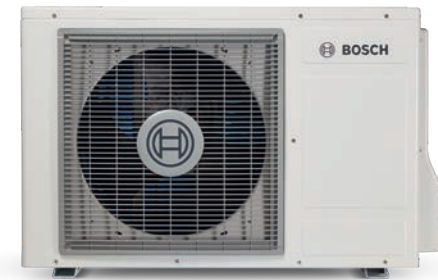


Outdoor unit

Indoor unit

Heat pump cylinder

Hybrid system – with combi boiler*



+



+



Outdoor unit

Hybrid indoor unit

Combi boiler

Hybrid system – with gas system boiler**



+



+



+



Outdoor unit

Hybrid indoor unit

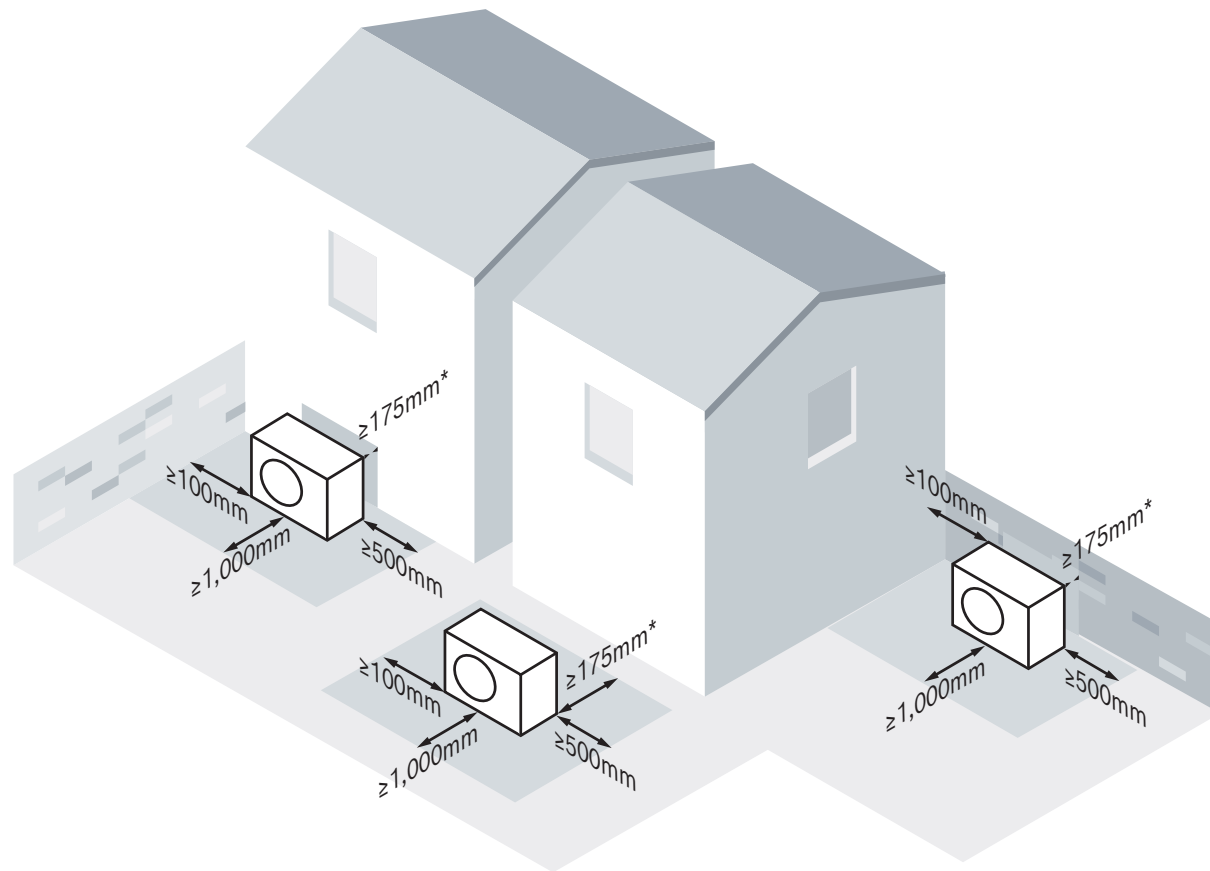
System boiler

Hot water cylinder

*Compatible with combi natural gas, LPG and oil boilers.
**Compatible with natural gas and LPG boilers with integral diverter valve.

System set-ups

The illustration below shows some possible system configurations and the necessary minimum clearances.



Clearances

- Front: 1,000mm
- Rear: 175mm*
- Left/Right: 100mm on fan side to wall
500mm on access side to wall

For further information and support, please contact:

Technical Helpline:

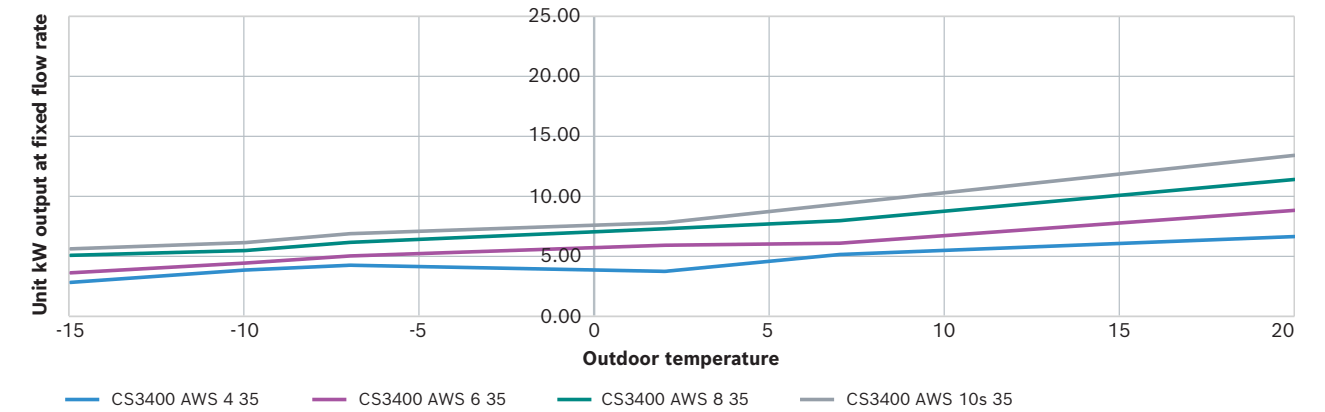
Tel: 0330 123 3366
Email: technical-advice@uk.bosch.com

*+450mm to wall required if using sound hood.

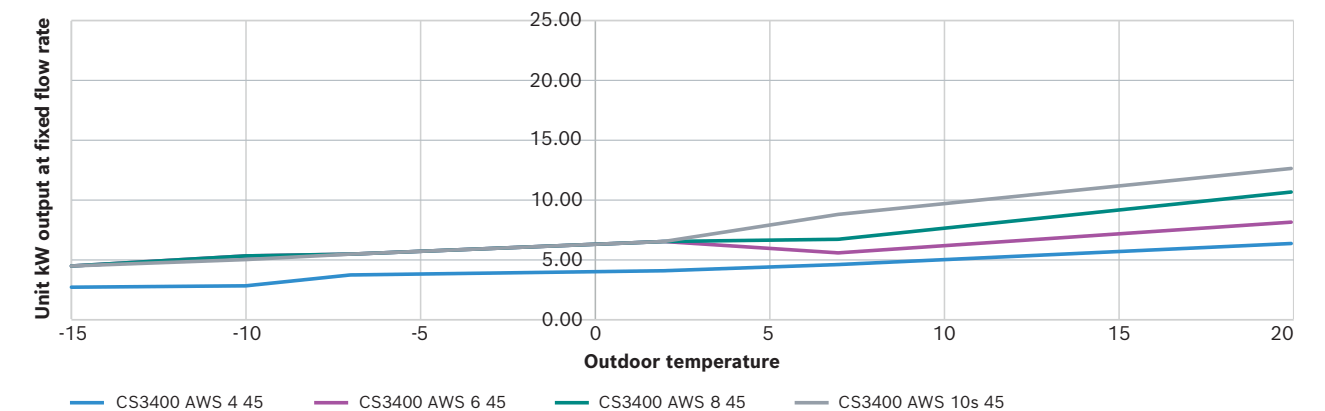
Heating performance

These graphs explain the output performance variations of each CS3400i output. They show the water temperature achievable in radiators in relation to the outdoor temperature. This information will help you to select the most appropriate model for your customer's home.

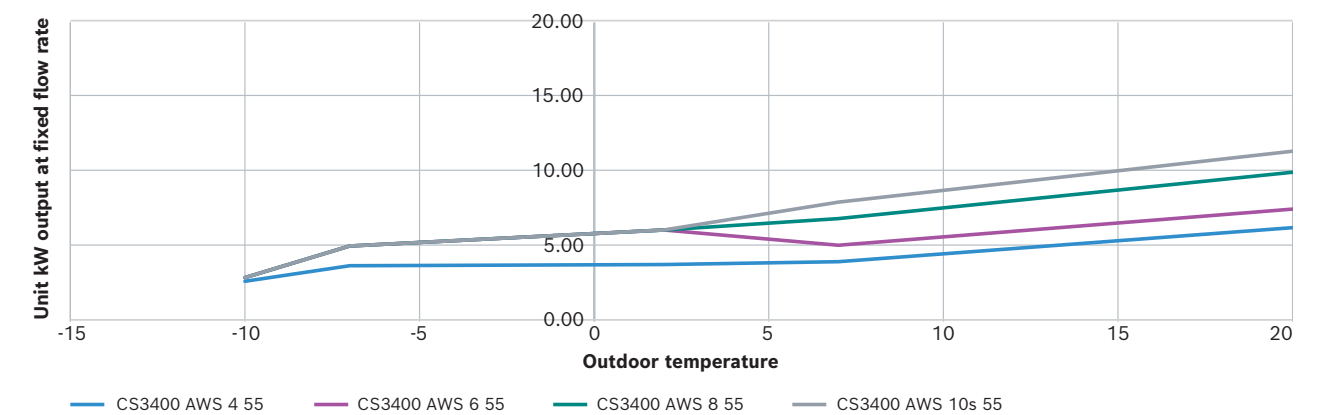
CS3400 35°C



CS3400 45°C

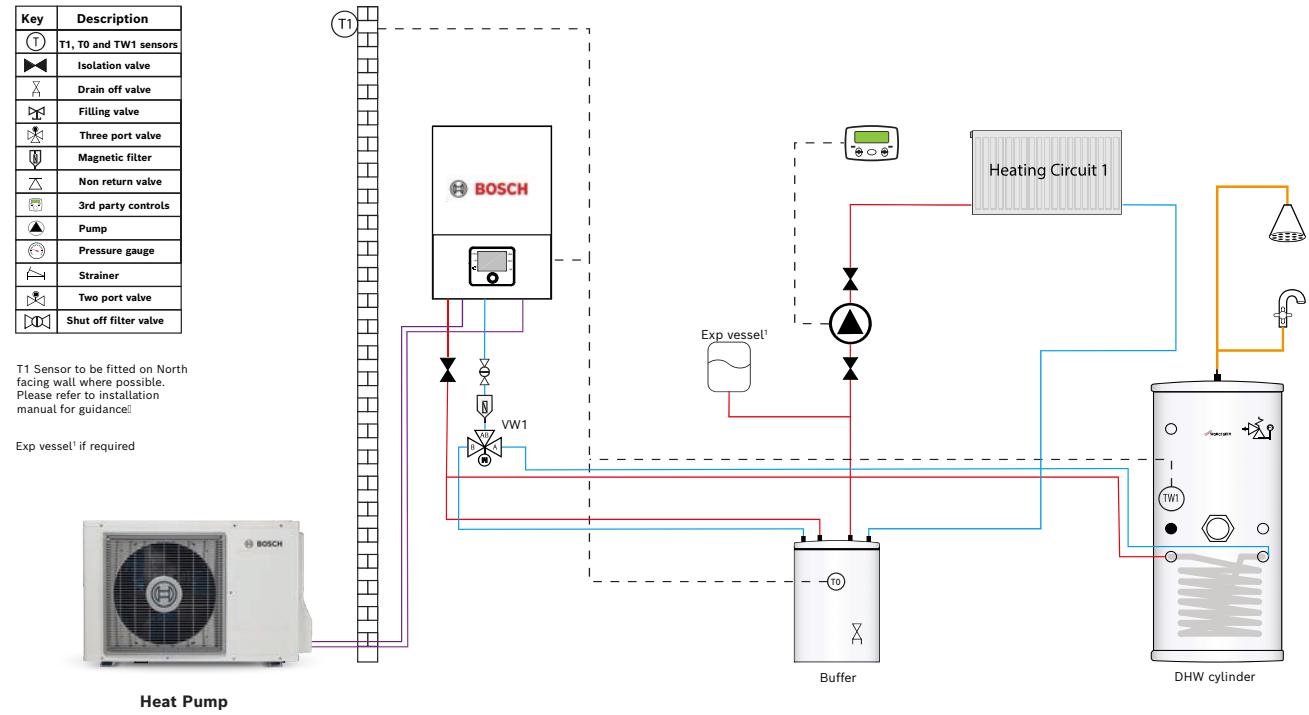


CS3400 55°C



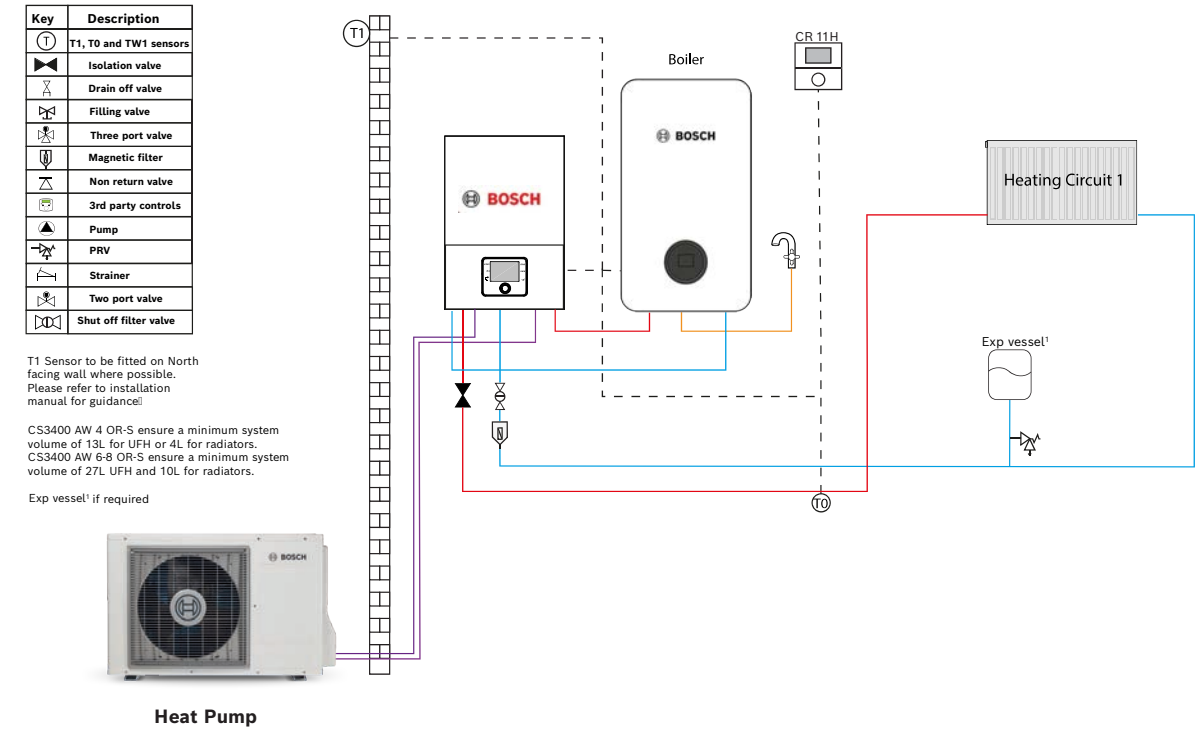
Schematics

CS3400i AWS 1 x rad, DHW, buffer and 3rd party controls



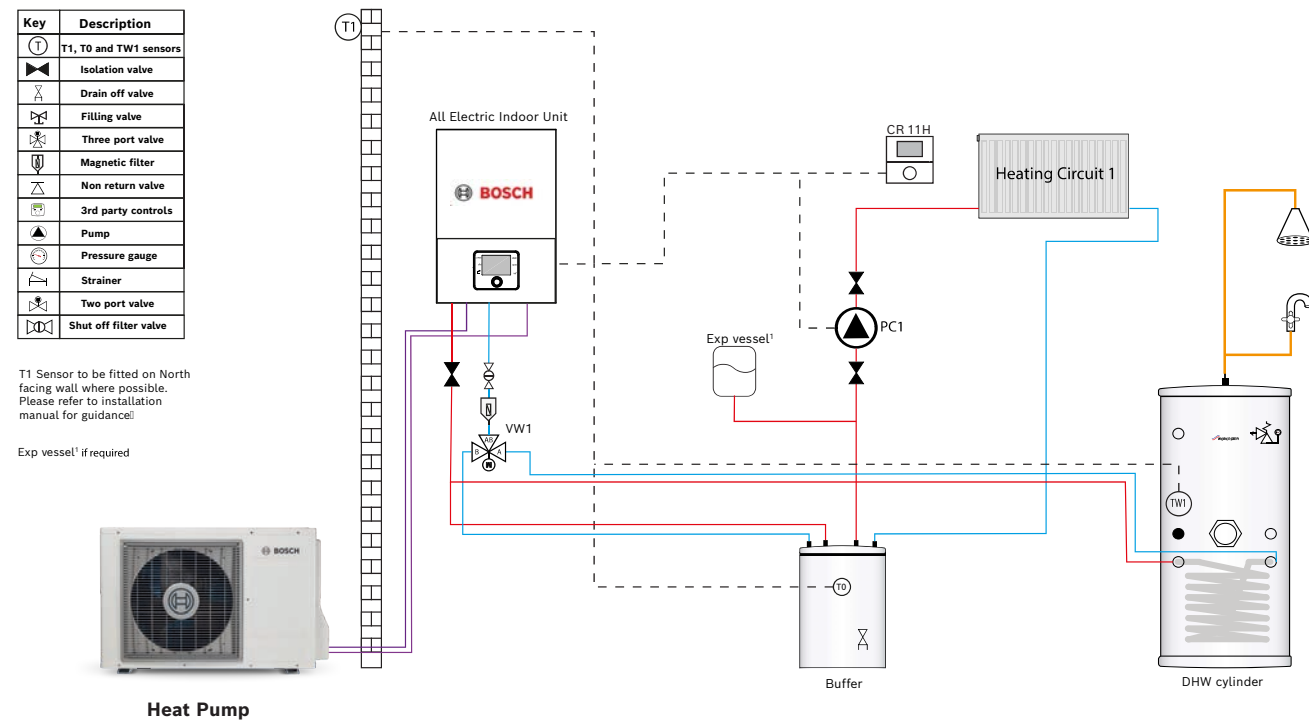
Wiring schematic available on request.

CS3400i AW OR-S Hybrid 1 x rad, no buffer, no bypass and CR11H



Wiring schematic available on request.

CS3400i AWS 1 x RAD, DHW, buffer and CR11H



Wiring schematic available on request.

All electrical work should be carried out by a registered engineer. Wiring must comply with the latest IET wiring regulations. Isolate the mains electricity supply before starting any work and observe all relevant safety precautions. Refer to all relevant product installation manuals for safety and installation instructions. Whilst it is always our intention to fully assist, it is essential to recognise that all information given by the company is provided in good faith and based upon the information available. Connection labels may not match those of the products installed on site. We recommend that advice should always be checked with your installer, electrician or the manufacturer of the product in question. Consequently, the company cannot be held responsible for any liability relating to the use or repetition of such information or part thereof. In addition, whilst making every reasonable effort to monitor the performance and quality of our supply, installation and service network, we do not accept responsibility for the workmanship or operation of any third party company.

Technical data



Outdoor units	4 OR-S 8 750 722 680	6 OR-S 8 750 722 681	8 OR-S 8 750 722 682	10 OR-S 8 750 722 683
Heating capacity for A-7/W35	4.3	5.1	6.2	6.9
COP for A7/W35	4.68	4.75	4.70	4.43
ERP class/Etas acc. to EN14825 (55 °C)	A++ (125%)	A++ (126%)	A++ (126%)	A++ (126%)
ERP class/Etas acc. to EN14825 (35 °C)	A+++	A+++	A+++	A+++
Refrigerant	R32	R32	R32	R32
Max. supply flow temperature (up to A-7 °C)	60°C	60°C	60°C	60°C
Sound power in accordance with EN 12102	61dB(A)	59dB(A)	59dB(A)	59dB(A)
Outdoor unit weight	51kg	66kg	66kg	66kg
Dimensions (W x D x H) mm	976x380x609	975x380x864	975x380x864	975x380x864
Power supply	230V	230V	230V	230V

Indoor unit	AWS 10E 7 738 602 259
Dimensions (W x D x H) mm	485x398x700
Weight	41kg
Electric booster heater	2-6kW
Expansion vessel	8L

Hybrid indoor unit	Hybrid AWS 8 738 808 679
Dimensions (W x D x H) mm	350x243x757
Weight	22kg



Accessories

	Related accessories	Part number
HP Cylinders	Green Storage WB Range Heat Pump Cylinder 150	7-733-601-189
	Green Storage WB Range Heat Pump Cylinder 180	7-733-601-333
	Green Storage WB Range Heat Pump Cylinder 210	7-733-601-334
	Green Storage WB Range Heat Pump Cylinder 250	7-733-601-335
	Green Storage WB Range Heat Pump Cylinder 300	7-733-601-336
Buffer Tanks	50l Buffer vessel	7-716-161-061
	120l Buffer vessel	7-735-500-777
Control	Bosch CR11H (room thermostat)	7-738-112-972
Accessories	MM100 Mixer	7-738-110-140
	Bracket Kit for MM100	8-738-205-073
	3 Way Valve 28mm (Moulded)	8-738-213-355
	3 Way Valve 22mm (Moulded)	8-738-213-356
	Cable CANbus 15m 2x2x0,75	8-738-206-183
	Cable CANbus 30m 2x2x0,75	8-738-206-184
	Hybrid Filter Set	7-736-604-293
	DHW /Flow Sensor 4m	8-738-206-017
	Sensor 4m T1/T4 Nr.1133	7-719-002-853
	Pipe Refrigerant 1/2_1/4 10m	7-733-701-502
	Pipe Refrigerant 1/2_1/4 20m	7-733-701-503
	Kit Refrigerant Pipe 1/4_5/8 20m	7-716-842-659
	Heating Cable Kit	7-738-602-276
	Floor Mounting Kit	7-716-161-065
	Wall Mounting	7-747-222-358
Pump Group	Connect-Key Set K30	8-750-742-716
	Pump Group HS25/6 s BO	7-736-601-142
	Pump Group HS25/6 BO	7-733-601-144
	Pump Group HSM25/6 BO	7-733-601-148
	Pump Group HS25/6 MM100 BO	7-733-601-151
	Pump Group HSM25/6 MM100 BO	7-733-601-155
	Pump Group Accessories	Accessory HKV 2/25/25 Manifold for 2 Pump Groups
Accessory HKV 2/25/32 Manifold for 3 Pump Groups		8-718-599-379
Accessory WHY/HKV 2/25/25 Manifold for 2 Pump Groups with LLH		8-718-599-383
LLH Accessory WHY DN25		8-718-599-384
Standalone LLH Accessory WHY 80/60		8-718-599-385
Wall Hung Installation Set 1		6-790-047-0
Wall Hung Installation Set 2 (Heating Circuit)		6-790-047-1
Wall Hung Installation Set 3		6-790-047-2
Thermocouple TB1	7-719-002-255	

Training

Ready for a heating revolution?

Wherever you are in your electrified home heating journey, from starting out to adding to your heat pump expertise, we can support you.

Heat pumps should only be installed, brought into operation and maintained by a competent professional. F-Gas certification required for installation of the CS3400i.

Start your journey with us

Becoming MCS certified is a mark of your excellence as an installer. We're here to support you with our range of MCS courses including:

- ▶ Water regulations certification (WRAS) course
- ▶ Level 3 Award Low temperature heating and hot water systems in dwellings
- ▶ Level 3 Award RQF installation and maintenance of air source heat pump systems

Our product training courses will help you get hands-on experience and understand all the features and benefits, specification, installation, and servicing.

Get in touch

Sales

Tel: 0330 123 9669

Email: sales.bosch@uk.bosch.com

Technical Helpline (Pre & Post Sales)

Tel: 0330 123 3366

Email: technical-advice@uk.bosch.com

Spare Parts

Tel: 0330 123 9779

Email: spares.mailbox@uk.bosch.com

Worcester Bosch

Cotswold Way
Warndon
Worcester
WR4 9SW

worcester-bosch.co.uk

Calls to and from Bosch Thermotechnology Ltd may be recorded for training and quality assurance purposes. Worcester Bosch is a brand name of Bosch Thermotechnology Ltd. This brochure is accurate at the date of printing, but may be superseded and should be disregarded if specification and/or appearances are changed in the interest of continued improvement. The statutory rights of the consumer are not affected.



Not MCS certified?

We can support you with unlocking government grants and extended guarantees.

If MCS isn't right for your business right now, you can use our third party MCS umbrella scheme - who will handle the design, training and MCS accreditation paperwork to enable your customer to apply for government grants.

Contact our pre-sales team to find out more:
0330 123 3366.



Scan to start your training:

worcester-bosch.co.uk/eacademy

Share

We would love to see your installations!

- Worcester Bosch Professional
- @WorcesterBoschProfessional
- @WorcesterBosch
- Worcester Bosch
- Worcester Bosch Group